

# Product Guide



***The future of*** technologically advanced, highly-efficient heating systems is here

COMBI BOILERS | SYSTEM BOILERS | OPEN VENT BOILERS | AIR SOURCE HEAT PUMPS

WATER HEATERS | COMMERCIAL | TRAINING & SUPPORT

# Vokèra by Riello

## Product range at a glance

### Combi Boilers



Unica MAX C

Page 12



Vision Plus C

Page 14



Vibe MAX C

Page 16

### System Boilers



Unica MAX S

Page 18



Vision Plus S

Page 20



Vibe MAX S

Page 22

### Open Vent Boilers



Mynute 20 VHE

Page 24

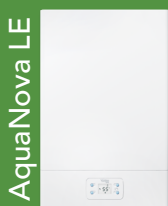
### Smart Controls



Hi, Comfort

Page 40

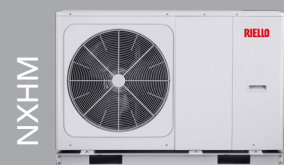
### Water Heaters



AquaNova LE

Page 44

### Air Source Heat Pumps



NXHM

Page 46

### Commercial Products



Page 48

## Contents

Domestic heating solutions	4
Vokèra by Riello technology	5
Support	
Technical training	6
After Sales Support and Quality Assurances	8
<b>Vokèra Affinity</b>	10
<b>Boiler systems for domestic applications</b>	
<b>Unica MAX C</b> High efficiency combi boiler	12
<b>Vision Plus C</b> High efficiency combi boiler	14
<b>Vibe MAX C</b> High efficiency combi boiler	16
<b>Unica MAX S</b> High efficiency system boiler	18
<b>Vision Plus S</b> High efficiency system boiler	20
<b>Vibe MAX S</b> High efficiency system boiler	22
<b>Mynute 20 VHE</b> High efficiency open vent boiler	24
Domestic boiler feature quick reference chart	26
Flue guidance and options	28
Choosing the right control	36
<b>Smart controls</b>	
<b>Hi, Comfort</b> The smarter home heating control	40
<b>Other controls</b>	
Energy saving and intelligent controls	42
<b>Water heaters</b>	
<b>AquaNova LE</b> Instantaneous multipoint water heater	44
<b>Renewable products</b>	
<b>NXHM</b> Monobloc air to water heat pump	46
<b>Commercial products</b>	
<b>Condexa Pro</b>	48
<b>Condexa HPR</b>	50
<b>Steel Pro Power</b>	52
How to contact us / useful contacts	54

# Domestic heating solutions

## About Us

Established 40 years ago, Vokèra operates across the UK and Ireland and through its parent brand Riello, is part of Carrier Global Comfort Solutions. Carrier is the leading global provider of healthy, safe, sustainable and intelligent building and cold chain solutions.

## 100 Years of Innovation

In 2022, Riello celebrated 100 years of innovation and engineering excellence in residential and commercial heating solutions. Riello's expertise is now firmly focused on the future with the decarbonisation of heating. Innovation and sustainability guide Riello in the way it operates and in the creation of cutting-edge systems. The objective is the continuous improvement of the quality of life, making the planet a better place to live today and for future generations.

## Looking to the Future...

Carrier is investing \$16 million to build an R&D Center of Excellence focused on residential and light commercial heating, air conditioning and domestic water systems located in Villasanta (MB), Italy. The goal is to expand the offering and strengthen the development of environmentally sustainable and innovative solutions, primarily heat pumps, hydrogen-ready boilers and IoT (Internet of Things) systems.

**RIELLO**  
Energy For Life



# Vokèra by Riello technology

## Radial stainless steel heat exchanger

Starting from the raw materials, this key component is designed and built to ensure the highest quality, no compromise. This provides maximum control over the manufacturing process, ensuring excellent flexibility and reliability of the thermal and corrosion resistant properties of the heat exchanger.

The heat exchanger, found across our boiler range, is a single piece component manufactured from superior quality stainless steel. It is a 'two pass' exchanger incorporating a retarder to maximise heat transfer. The radial single coil design and large cross-sectional area eliminate the risk of scaling or superheated areas and also allows for front servicing.



## Active Combustion Control (ACC) and Carbon Monoxide (CO) monitor

The **Unica MAX** range features ACC (Active Combustion Control), which uses the burner electrode ionisation current to monitor the air/gas mixture of the boiler. The quality of the gas affects the ionisation signal and by adjusting the air/gas mix in order to maintain a specific ionisation value; the **Unica MAX** will use less gas when the quality is good. Thus optimising gas consumption and reducing emissions without sacrificing performance.

Safety is the most important consideration with any gas appliance, so the **Unica MAX** takes this a step further and features an excess CO monitor. In the unlikely event of excess CO being detected the **Unica MAX** will shut down and not run until the issue has been resolved.

## Intelligent controls

Vokèra boilers boast some of the best use of technology, including OpenTherm, that help maximise efficiency. We are committed to making our controls as straight forward as possible, ensuring our controls are extremely simple to install with our boilers. Hi, Comfort offers Internet connected control and multi-zone efficiency.



Hi, Comfort T100

# Support

## Technical training

Vokèra technical training delivers real value to Gas Safe Registered engineers. Our training focuses on an engineer's need to become familiar with the product and to enable quick and simple installation or repair. Our training is structured to ensure you cover: the appliance range, installation, operation, wiring, flueing, benchmark, fault finding and commissioning. To attend you must be Gas Safe Registered.\*

For more information or to book a course call **01727 744002** or email [training@vokera.co.uk](mailto:training@vokera.co.uk)

### Vokèra product courses

BOILER INSTALLATION AND COMMISSIONING COURSE	1 DAY
FAULT FINDING PRODUCT COURSE	1 DAY
CONTROLS COURSE (INC 'BOILER PLUS' OVERVIEW)	1 DAY
HEAT PUMP OVERVIEW PRODUCT COURSE	1 DAY
INDIVIDUAL OR TAILORED WORKSHOPS	1 DAY
COMMERCIAL HEATING PRODUCT COURSE	1 DAY

\*excluding the Controls course.



### Join our FREE webinars

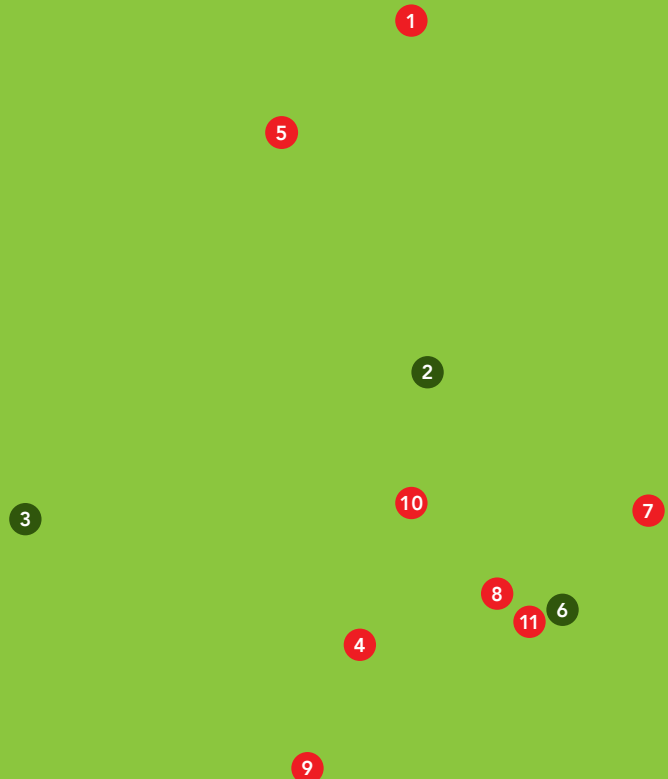
Our webinar programme covers topics similar to our face-to-face training. Held either at 4pm or 7pm, these are live and fully interactive, with multiple cameras so you can get up close to the products. There are regular Q&A breaks throughout the sessions where, using the Q&A function, you can type your questions in, and our technical trainer will answer them live. No webcam and microphone required.

For further details visit:

[www.vokera.co.uk/webinars](http://www.vokera.co.uk/webinars)

# Vokèra offers training across the UK & Ireland:

- 1 Aberdeen
- 2 Bradford
- 3 Callan Co Kilkenny
- 4 Cardiff (Treforest)
- 5 Kirkintilloch
- 6 London Colney
- 7 Norwich
- 8 Oxford
- 9 Plymouth
- 10 Telford
- 11 Uxbridge



## Support

### After sales support / spares



#### Customer care team – 01274 866100

We pride ourselves on providing a first class after sales service with a dedicated customer care centre in the UK and Ireland, supported with 41 factory trained Vokèra field engineers along with 85 service agents, who support every Vokèra installation.

- Every engineer carries a full complement of spare parts to help ensure a high first time fix rate
- Real time data field reports for service contracts
- Full monthly reports can be provided to monitor call outs
- One point of contact to report and discuss service issues
- Full audit trail to track service call

#### Technical support – 01727 744028

Our fully trained technical team provides post sales technical help to support the installer.

#### Spare parts – 01727 744000

**Vokèra**  
GENUINE PARTS  
BY **RIELLO**



#### Product warranty

As with all domestic gas boilers, an annual service is recommended to maintain optimum performance, efficiency and safety. In addition to a parts and labour warranty\* we also make a promise to all our customers:-

Our dedicated customer service team and Gas Safe Registered engineers are available 6 days a week to support the needs of every single Vokèra boiler installation. They aim to respond to every call within 48 hours or less, or at a time agreed with the homeowner. They will make every effort to solve any technical problem over the phone, answering quickly, politely and at all times acting in the best interest of our customers.

*\*All warranties are subject to registration and annual servicing.*

#### Accreditations and quality assurances

Vokèra is recognised for the quality and reliability of its products.

At every stage from research and development, through to production and after sales support, we build quality in as standard.

- BS EN ISO9001:2000 Approved
- Members of the Heating and Hotwater Industry Council (HHIC)
- Support the 'Benchmark' initiative
- Gas Safe Registered trainers
- Every product is pre-tested at the factory ensuring the highest quality and reliability



# VokèraAffinity

If you are a gas installer registered with either Gas Safe Register (UK) or RGII (ROI) then you really should become a member of Vokèra Affinity.



Now, with just one simple online registration you can register your product installation with Vokèra to receive **FREE Gas Safe notification (UK only\*)**, **extended warranty activation** and much more.

**Not yet a member? Sign up today!**



In the UK scan or visit  
[www.vokeraaffinity.co.uk](http://www.vokeraaffinity.co.uk)



In Ireland scan or visit  
[www.vokeraaffinity.ie](http://www.vokeraaffinity.ie)

\* In ROI, boiler installation registration with RGII must be carried out in the usual way.

Thousands of installers have been benefiting from Affinity since its launch in 2006.

If you are a UK gas installer registered with the Gas Safe Register and install Vokèra products then you really should become a member of Vokèra Affinity and take advantage of the many installer benefits.

FREE Gas Safe Notification – just one form and we'll notify your Vokèra boiler installation with Gas Safe Register and pay the notification <sup>(1)</sup>. Your customers product warranty will be registered <sup>(2)</sup>.

Priority support – you'll get priority technical advice and access to a support team who are ready to help you.

Seasonal promotions – you'll be the first to know important information on our special seasonal promotional offers.

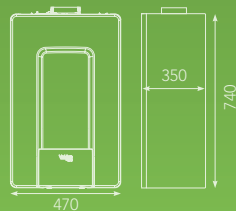
*(1) You will have the opportunity to tell us if you will be carrying out your own servicing work so will not actively target your customers for servicing.*

*(2) Excluding social housing contracts.*

# Unica MAX C High efficiency combi boiler



Dimensions (mm)



Specifications	30C	35C	40C
PRODUCT ORDER CODE	20197307	20188336	20188337
CENTRAL HEATING			
HEAT INPUT (KW)	25	32	32
HEAT OUTPUT 80/60°C (KW) (MAX/MIN)	24.43 / 4.7	31.23 / 4.7	31.23 / 4.7
HEAT OUTPUT 50/30°C (KW) (MAX/MIN)	26.88 / 5.06	34.37 / 5.06	34.37 / 5.06
DOMESTIC HOT WATER			
HEAT INPUT (KW)	30	34.6	40
FLOW RATE - 35°C RISE (L/MIN)	12.9	14.2	16.4
WEIGHT			
DRY WEIGHT (KG)	40	40	40
EFFICIENCY			
ErP SEASONAL SPACE HEATING ENERGY EFFICIENCY (CLASS/%)	A/94	A/94	A/94
ErP WATER HEATING EFFICIENCY (XL PROFILE) (CLASS/%)	A/85	A/85	A/85
SAP 2009/2012 EFFICIENCY (%)		89.1	89.3
NO <sub>x</sub> CLASS	6	6	6

## Accessories

DESCRIPTION	CODE
HI, COMFORT T100 WI-FI KIT	20193357
REC10H RELOCATION KIT	20150823
CONNECT HYBRID HD1(1-ZONE)	20130801
CONNECT HYBRID HD2 (2-ZONE)	20130802
CONNECT HYBRID AT/BT (HIGH T & LOW T ZONES)	20130803
METAL ENCLOSURE FOR CONNECT HYBRID	20130808
VALVE KIT FOR CONNECT HYBRID	20131752
SPACING FRAME	20139516
AUTOSTOP KEY	515
AUXILIARY ZONE CONTROL BE16	20132795
BE16 EXPANSION MODULE	20132796

NB: For every 45° and 90° bend deduct 1m from flue length

Flue Lengths	30C	35C	40C
FLUE DETAILS (CONCENTRIC)			
MAXIMUM HORIZONTAL FLUE LENGTH 60/100MM	6M	6M	5M
MAXIMUM VERTICAL FLUE LENGTH 60/100MM	7M	7M	6M
MAXIMUM HORIZONTAL FLUE LENGTH 80/125MM	15M	15M	12 M
MAXIMUM VERTICAL FLUE LENGTH 80/125MM	15M	15M	12M

## Horizontal and Vertical Flue Options (60/100)

COMPONENT	DESCRIPTION	CODE
	TELESCOPIC HORIZONTAL FLUE TERMINAL (XT) 400MM - 575MM <sup>(1)</sup>	20122761
	HORIZONTAL FLUE TERMINAL (XF)	20122759
	PLUME MANAGEMENT KIT	20142842
	90° BEND	20132059
	45° BEND (PAIR)	20132058
	500MM EXTENSION	20132060
	1000MM EXTENSION	20132061
	2000MM EXTENSION	20132062
	TELESCOPIC EXTENSION 372MM - 519MM	20131979
	WALL BRACKETS (5 X 100MM)	20135587
	VERTICAL FLUE TERMINAL (XV)	20122763
	PITCHED ROOF FLASHING PLATE	20132050
	FLAT ROOF FLASHING PLATE	20135582

For a complete list of flues and accessories, including 80/125 concentric flues and twin flues see page 32.

10 Year Warranty <sup>(1)</sup>

Hybrid Ready

OpenTherm Inside

Text Driven Menu

Built-in Filling Loop

High DHW Performance

Click Fit Flue

Stainless Steel Heat Exchanger

Compatible Out Of The Box

Reduced Emissions ACC Inside

<sup>(1)</sup>Subject to registration and annual service.

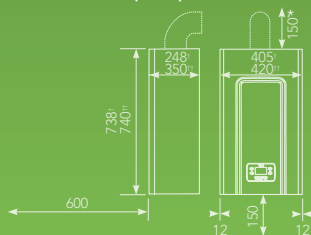


Compatible with Hi, Comfort

## High efficiency combi boiler



Dimensions (mm) and Clearances (mm)



\*From casing or 25mm above flue elbow (whichever is applicable)  
 †Models 25C & 30C  
 ††Models 35C & 40C

### Specifications

	25C	30C	35C	40C
PRODUCT ORDER CODE	20173520	20173521	20174724	20174725
<b>CENTRAL HEATING</b>				
HEAT INPUT (kW)	20	25	30	35
HEAT OUTPUT @ 80/60°C (kW) (MAX/MIN)	19.5 / 4.9	24.4 / 5.9	29.2 / 4.7	29.2 / 4.7
HEAT OUTPUT @ 50/30°C (kW) (MAX/MIN)	20.8 / 4.9	26.2 / 6.4	32.3 / 5.1	32.3 / 5.1
<b>DOMESTIC HOT WATER</b>				
HEAT INPUT (kW)	25	31.6	34.6	40
FLOW RATE - 35°C RISE (L/MIN)	10.2	12.9	14.2	16.4
<b>WEIGHT</b>				
DRY WEIGHT (KG)	27	29	37	37
<b>EFFICIENCY</b>				
ErP SEASONAL SPACE HEATING ENERGY EFFICIENCY (CLASS/%)	A/93	A/93	A/92	A/92
ErP WATER HEATING EFFICIENCY (XL PROFILE) (CLASS/%)	A/85	A/84	A/88	A/86

### Accessories

DESCRIPTION	CODE			
Hi, COMFORT T100 WI-FI KIT	20193357			
7 DAY RF ROOM THERMOSTAT CONTROL	20101743			
SPACING FRAME	20030704	20139516		
MAGNETIC FILTER	29450199			
PRE FIXING JIG	20177531			
CONDENSATE PUMP	404			
LPG CONVERSION KITS	20082917	20113110	20080711	

#### Vision Plus 25C & 30C



Lightweight & Compact

Cupboard Fit

Rear Flue

#### Vision Plus 35C & 40C



1:8 modulation

High DHW Flow Rates

Radial Heat Exchanger

NB: For every 45° and 90° bend deduct 1m from flue length

Flue lengths	25C	30C	35C	40C
<b>FLUE DETAILS (CONCENTRIC)</b>				
MAX HORIZONTAL FLUE LENGTH (60/100MM)	5.85M	4.85M	6M	6M
MAX VERTICAL FLUE LENGTH (60/100MM)	6.85M	5.85M	7M	7M
MAX HORIZONTAL FLUE LENGTH (80/125MM)	15M	12M	15M	15M
MAX VERTICAL FLUE LENGTH (80/125MM)	15M	12M	15M	15M
<b>FLUE DETAILS (TWIN PIPES)</b>				
MAX HORIZONTAL FLUE LENGTH (80MM/80MM)	30M/30M	25M/25M	25M/25M	25M/25M
MAX VERTICAL FLUE LENGTH (80MM/80MM)	30M/30M	25M/25M	25M/25M	25M/25M

### Horizontal and vertical flue options (60/100)

COMPONENT	DESCRIPTION	CODE
	TELESCOPIC REAR FLUE 320MM - 825MM <sup>(2)</sup>	20132064
	TELESCOPIC HORIZONTAL FLUE TERMINAL (XT) 400MM - 575MM <sup>(2)</sup>	20122761
	HORIZONTAL FLUE TERMINAL (XF)	20122759
	PLUME MANAGEMENT KIT	20142842
	90° BEND	20132059
	45° BEND (PAIR)	20132058
	500MM EXTENSION	20132060
	1000MM EXTENSION	20132061
	2000MM EXTENSION	20132062
	TELESCOPIC EXTENSION 372MM - 519MM	20131979
	WALL BRACKETS (5 X 100MM)	20135587
	VERTICAL FLUE TERMINAL (XV)	20122763
	PITCHED ROOF FLASHING PLATE	20132050
	FLAT ROOF FLASHING PLATE	20135582

For a complete list of flues and accessories, including 80/125 concentric flues and twin flues see page 32..



7 Year Warranty<sup>(1)</sup>



ErP Compliant



OpenTherm Inside



7 Day Time Clock

(1) Subject to registration and annual service, terms and conditions apply.

(2) Models 25C & 30 C only.



Built-in Filling Loop



Universal Pipe Layout



Click Fit Flue



Converts to LPG



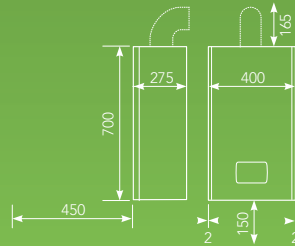
Compatible with Hi, Comfort



## High efficiency combi boiler



### Dimensions and Clearances (mm)



\*From casing or 25mm above flue elbow (whichever is applicable)

### Specifications

	26C	30C
PRODUCT ORDER CODE	20188719	20188721
<b>CENTRAL HEATING</b>		
HEAT INPUT (kW)	20	25
HEAT OUTPUT @ 80/60°C (kW) (MAX/MIN)	19.4 / 2.9	24.4 / 3.8
HEAT OUTPUT @ 50/30°C (kW) (MAX/MIN)	20.9 / 3.0	26.8 / 4.0
<b>DOMESTIC HOT WATER</b>		
HEAT INPUT (kW)	25	30
FLOW RATE - 35°C RISE (L/MIN)	10.2	12.3
<b>WEIGHT</b>		
DRY WEIGHT (KG)	28.5	30
<b>EFFICIENCY</b>		
ErP SEASONAL SPACE HEATING ENERGY EFFICIENCY (CLASS/%)	A/93	A/93
ErP WATER HEATING EFFICIENCY (XL PROFILE) (CLASS/%)	A/84	A/84
SAP 2009/2012 EFFICIENCY (%)	89.1	89.1
NO <sub>x</sub> CLASS	6	6

### Accessories

DESCRIPTION	CODE
HI, COMFORT T100 WI-FI KIT	20193357
HI, COMFORT K100 SMART KEY	20168501
OUTSIDE WEATHER COMPENSATION SENSOR	1220559
LPG CONVERSION KIT	20038060   20007958

NB: For every 45° deduct 1m and 90° bend deduct 1.5m from flue length

Flue lengths	26C	30C
<b>FLUE DETAILS (CONCENTRIC)</b>		
MAX HORIZONTAL FLUE LENGTH (60/100MM)	5.85M	4.85M
MAX VERTICAL FLUE LENGTH (60/100MM)	6.85M	5.85M
MAX HORIZONTAL FLUE LENGTH (80/125MM)	14M	12M
MAX VERTICAL FLUE LENGTH (80/125MM)	14M	12M
<b>FLUE DETAILS (TWIN PIPES)</b>		
MAX HORIZONTAL FLUE LENGTH (80MM/80MM)	25M/25M	20M/20M
MAX VERTICAL FLUE LENGTH (80MM/80MM)	25M/25M	20M/20M

### Horizontal and vertical flue options (60/100)

COMPONENT	DESCRIPTION	CODE
	TELESCOPIC HORIZONTAL FLUE TERMINAL (XT) 400MM - 575MM <sup>(1)</sup>	20122761
	HORIZONTAL FLUE TERMINAL (XF)	20122759
	PLUME MANAGEMENT KIT	20142842
	90° BEND	20132059
	45° BEND (PAIR)	20132058
	500MM EXTENSION	20132060
	1000MM EXTENSION	20132061
	2000MM EXTENSION	20132062
	TELESCOPIC EXTENSION 372MM - 519MM	20131979
	WALL BRACKETS (5 X 100MM)	20135587
	VERTICAL FLUE TERMINAL (XV)	20122763
	PITCHED ROOF FLASHING PLATE	20132050
	FLAT ROOF FLASHING PLATE	20135582

(1) Subject to registration and annual service, terms and conditions apply.

For a complete list of flues and accessories, including 80/125 concentric flues and twin flues see page 32..



5 Year Warranty<sup>(1)</sup>



OpenTherm Inside



Universal Pipe Layout Version



Built-in Filling Loop<sup>(1)</sup>



Click Fit Flue



Converts to LPG



Stainless Steel Heat Exchanger



Bluetooth Easi-Connect

Scan the QR code to watch the video



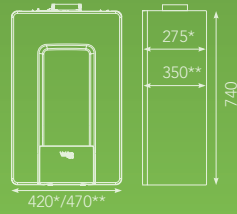
Compatible with Hi, Comfort



Compatible with Easi-Connect

# Unica MAX

## High efficiency system boiler



\* 20S  
\*\*30S

NB: For every 45° and 90° bend deduct 1m from flue length

Specifications	20S	30S
PRODUCT ORDER CODE	20188338	20188339
CENTRAL HEATING		
HEAT INPUT (kW)	20	32
HEAT OUTPUT 80/60°C (kW) (MAX/MIN)	19.5 / 3.46	31.23 / 4.69
HEAT OUTPUT 50/30°C (kW) (MAX/MIN)	21.32 / 3.85	34.37 / 5.06
WEIGHT		
DRY WEIGHT (KG)	32	37.5
EFFICIENCY		
ErP SEASONAL SPACE HEATING ENERGY EFFICIENCY (CLASS/%)	A/93	A/94
SAP 2009/2012 EFFICIENCY (%)	89.0	89.1
NO <sub>x</sub> CLASS	6	6

Accessories	
DESCRIPTION	CODE
REC10H RELOCATION KIT	20150823
CONNECT HYBRID HD1(1-ZONE)	20130801
CONNECT HYBRID HD2 (2-ZONE)	20130802
CONNECT HYBRID AT/BT (HIGH T & LOWT ZONES)	20130803
METAL ENCLOSURE FOR CONNECT HYBRID	20130808
VALVE KIT FOR CONNECT HYBRID	20131752
SPACING FRAME	20139516
AUTOSTOP KEY	515
AUXILIARY ZONE CONTROL BE16	20132795
BE16 EXPANSION MODULE	20132796

Flue Lengths	20S	30S
FLUE DETAILS (CONCENTRIC)		
MAXIMUM HORIZONTAL FLUE LENGTH 60/100MM	10M	6M
MAXIMUM VERTICAL FLUE LENGTH 60/100MM	11M	7M
MAXIMUM HORIZONTAL FLUE LENGTH 80/125MM	25M	15M
MAXIMUM VERTICAL FLUE LENGTH 80/125MM	25M	15M

Horizontal and vertical flue options (60/100)		
COMPONENT	DESCRIPTION	CODE
	TELESCOPIC HORIZONTAL FLUE TERMINAL (XT) 400MM - 575MM <sup>(1)</sup>	20122761
	HORIZONTAL FLUE TERMINAL (XF)	20122759
	PLUME MANAGEMENT KIT	20142842
	90° BEND	20132059
	45° BEND (PAIR)	20132058
	500MM EXTENSION	20132060
	1000MM EXTENSION	20132061
	2000MM EXTENSION	20132062
	TELESCOPIC EXTENSION 372MM - 519MM	20131979
	WALL BRACKETS (5 X 100MM)	20135587
	VERTICAL FLUE TERMINAL (XV)	20122763
	PITCHED ROOF FLASHING PLATE	20132050
	FLAT ROOF FLASHING PLATE	20135582

For a complete list of flues and accessories, including 80/125 concentric flues and twin flues see page 32.

10 Year Warranty<sup>(1)</sup>

Hybrid Ready

OpenTherm Inside

Text Driven Menu

Click Fit Flue

Stainless Steel Heat Exchanger

Compatible Out Of The Box

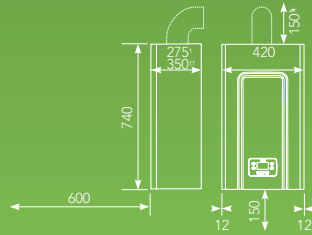
Reduced Emissions ACC Inside

<sup>(1)</sup>Subject to registration and annual service.

## High efficiency system boiler



Dimensions (mm) and Clearances (mm)



\*From casing or 25mm above flue elbow (whichever is applicable)  
 †Model 20S  
 ††Models 25S & 30S

### Specifications

	20S	25S	30S
PRODUCT ORDER CODE	20174726	20174728	20174729
CENTRAL HEATING			
HEAT INPUT (kW)	20	25	30
HEAT OUTPUT @ 80/60°C (kW) (MAX/MIN)	19.4 / 3.4	24.4 / 4.7	29.2 / 4.7
HEAT OUTPUT @ 50/30°C (kW) (MAX/MIN)	21.3 / 3.7	27.0 / 5.1	32.3 / 5.1
WEIGHT			
DRY WEIGHT (KG)	34	36	36
EFFICIENCY			
ErP SEASONAL SPACE HEATING ENERGY EFFICIENCY (CLASS/%)	A/92	A/92	A/92
SAP 2009/2012 EFFICIENCY (%)	88.6	88.6	88.6
NO <sub>x</sub> CLASS	6	6	6

### Accessories

DESCRIPTION	CODE
OUTSIDE WEATHER COMPENSATION SENSOR	1220559
ZONE MANAGEMENT KIT	20132795
ADDITIONAL ZONE MODULE	20132796
RELAY (BE09)	20062614
RELAY (ITF05)	20000783
SPACING FRAME	20139516
MAGNETIC FILTER	29450199
PRE FIXING JIG	20177531
CONDENSATE PUMP	404
LPG CONVERSION KITS	20007958   20080711

NB: For every 45° and 90° bend deduct 1m from flue length

Flue lengths	20S	25S	30S
FLUE DETAILS (CONCENTRIC)			
MAX HORIZONTAL FLUE LENGTH (60/100MM)	10M	6M	6M
MAX VERTICAL FLUE LENGTH (60/100MM)	11M	7M	7M
MAX HORIZONTAL FLUE LENGTH (80/125MM)	25M	15M	15M
MAX VERTICAL FLUE LENGTH (80/125MM)	25M	15M	15M
FLUE DETAILS (TWIN PIPES)			
MAX HORIZONTAL FLUE LENGTH (80MM/80MM)	50M/50M	25M/25M	25M/25M
MAX VERTICAL FLUE LENGTH (80MM/80MM)	50M/50M	25M/25M	25M/25M

### Horizontal and vertical flue options (60/100)

COMPONENT	DESCRIPTION	CODE
	TELESCOPIC HORIZONTAL FLUE TERMINAL (XT) 400MM - 575MM <sup>(1)</sup>	20122761
	HORIZONTAL FLUE TERMINAL (XF)	20122759
	PLUME MANAGEMENT KIT	20142842
	90° BEND	20132059
	45° BEND (PAIR)	20132058
	500MM EXTENSION	20132060
	1000MM EXTENSION	20132061
	2000MM EXTENSION	20132062
	TELESCOPIC EXTENSION 372MM - 519MM	20131979
	WALL BRACKETS (5 X 100MM)	20135587
	VERTICAL FLUE TERMINAL (XV)	20122763
	PITCHED ROOF FLASHING PLATE	20132050
	FLAT ROOF FLASHING PLATE	20135582

For a complete list of flues and accessories, including 80/125 concentric flues and twin flues see page 32.

(1) Subject to registration and annual service, terms and conditions apply.

ErP Compliant

7 Year Warranty<sup>(1)</sup>

OpenTherm Inside

7 Day Time Clock<sup>(1)</sup>

Radial Heat Exchanger

BUILT-IN ON-BOARD RELAY

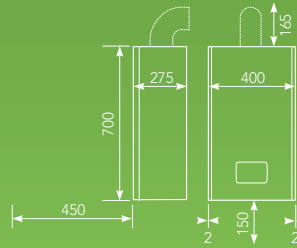
Click Fit Flue

Converts to LPG

## High efficiency system boiler



### Dimensions and Clearances (mm)



\*From casing or 25mm above flue elbow (whichever is applicable)

### Specifications

	20S	25C
PRODUCT ORDER CODE	20188722	20188724
CENTRAL HEATING		
HEAT INPUT (kW)	20	25
HEAT OUTPUT @ 80/60°C (kW) (MAX/MIN)	19.4 / 2.9	24.4 / 3.8
HEAT OUTPUT @ 50/30°C (kW) (MAX/MIN)	20.9 / 3.0	26.8 / 4.0
WEIGHT		
DRY WEIGHT (KG)	27.5	29
EFFICIENCY		
ErP SEASONAL SPACE HEATING ENERGY EFFICIENCY (CLASS/%)	A/93	A/93
SAP 2009/2012 EFFICIENCY (%)	89.1	89.1
NO <sub>x</sub> CLASS	6	6

### Accessories

DESCRIPTION	CODE
HI, COMFORT K100 SMART KEY	20168501
OUTSIDE WEATHER COMPENSATION SENSOR	1220559
LPG CONVERSION KIT	20038060   20007958

NB: For every 45° deduct 1m and 90° bend deduct 1.5m from flue length

Flue lengths	20S	25S
FLUE DETAILS (CONCENTRIC)		
MAX HORIZONTAL FLUE LENGTH (60/100MM)	5.85M	4.85M
MAX VERTICAL FLUE LENGTH (60/100MM)	6.85M	5.85M
MAX HORIZONTAL FLUE LENGTH (80/125MM)	14M	12M
MAX VERTICAL FLUE LENGTH (80/125MM)	14M	12M
FLUE DETAILS (TWIN PIPES)		
MAX HORIZONTAL FLUE LENGTH (80MM/80MM)	25M/25M	20M/20M
MAX VERTICAL FLUE LENGTH (80MM/80MM)	25M/25M	20M/20M

### Horizontal and vertical flue options (60/100)

COMPONENT	DESCRIPTION	CODE
	TELESCOPIC HORIZONTAL FLUE TERMINAL (XT) 400MM - 575MM <sup>(1)</sup>	20122761
	HORIZONTAL FLUE TERMINAL (XF)	20122759
	PLUME MANAGEMENT KIT	20142842
	90° BEND	20132059
	45° BEND (PAIR)	20132058
	500MM EXTENSION	20132060
	1000MM EXTENSION	20132061
	2000MM EXTENSION	20132062
	TELESCOPIC EXTENSION 372MM - 519MM	20131979
	WALL BRACKETS (5 X 100MM)	20135587
	VERTICAL FLUE TERMINAL (XV)	20122763
	PITCHED ROOF FLASHING PLATE	20132050
	FLAT ROOF FLASHING PLATE	20135582

(1) Subject to registration and annual service, terms and conditions apply.

For a complete list of flues and accessories, including 80/125 concentric flues and twin flues see page 32..



5 Year Warranty<sup>(1)</sup>



OpenTherm Inside



Universal Pipe Layout Version



Click Fit Flue



Converts to LPG



Stainless Steel Heat Exchanger

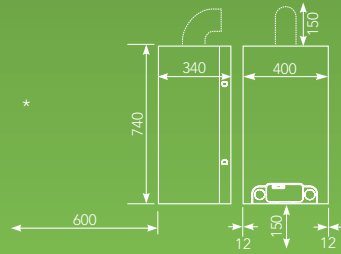
Scan the QR code to watch the video



## High efficiency open vent boiler



Dimensions and Clearances (mm)



\*From casing or 25mm above flue elbow (whichever is applicable)

### Specifications

### MYNUTE 20 VHE

PRODUCT ORDER CODE	20144035
CENTRAL HEATING	
HEAT INPUT (kW)	20
HEAT OUTPUT @ 80/60°C (kW)	19.7 / 5.0
HEAT OUTPUT @ 50/30°C (kW)	21.2 / 5.3
WEIGHT	
DRY WEIGHT (KG)	28
EFFICIENCY	
ErP SEASONAL SPACE HEATING ENERGY EFFICIENCY (CLASS/%)	A/92

### Options

DESCRIPTION	CODE
SPACING FRAME	2359689
MAGNETIC FILTER	29450199
CONDENSATE PUMP	404
WHITE PIPE COVER 400MM	518
MYNUTE VHE LPG CONVERSION KIT	20028555

NB: For every 45° and 90° bend deduct 1m from flue length

### Flue lengths

### MYNUTE 20 VHE

FLUE DETAILS (CONCENTRIC)	
MAX HORIZONTAL FLUE LENGTH (60/100MM)	7.8M
MAX VERTICAL FLUE LENGTH (60/100MM)	8.8M
MAX HORIZONTAL FLUE LENGTH (80/125MM)	20M
MAX VERTICAL FLUE LENGTH (80/125MM)	25M
FLUE DETAILS (TWIN PIPES)	
MAX HORIZONTAL FLUE LENGTH (80MM/80MM)	40M/40M
MAX VERTICAL FLUE LENGTH (80MM/80MM)	40M/40M

### Horizontal and vertical flue options (60/100)

COMPONENT	DESCRIPTION	CODE
	TELESCOPIC HORIZONTAL FLUE TERMINAL 400MM - 575MM <sup>(1)</sup>	20131981
	HORIZONTAL FLUE TERMINAL	20132063
	PLUME MANAGEMENT KIT	20142842
	90° BEND	20132059
	45° BEND (PAIR)	20132058
	500MM EXTENSION	20132060
	1000MM EXTENSION	20132061
	2000MM EXTENSION	20132062
	TELESCOPIC EXTENSION 372MM - 519MM	20131979
	WALL BRACKETS (5 X 100MM)	20135587
	VERTICAL FLUE TERMINAL	20131983
	PITCHED ROOF FLASHING PLATE	20132050
	FLAT ROOF FLASHING PLATE	20135582

For a complete list of flues and accessories, including 80/125 concentric flues and twin flues see page 32.

(1) Subject to registration and annual service, terms and conditions apply.



ErP Compliant



5 Year Warranty<sup>(1)</sup>



Radial Heat Exchanger



Versatile Flueing Options

# Domestic boiler feature chart

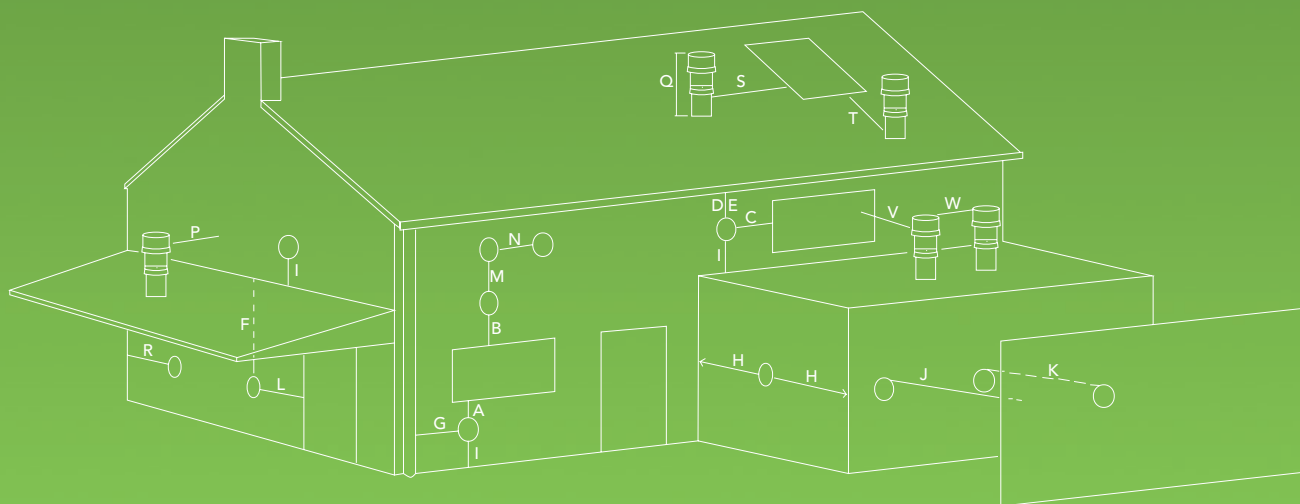
Use this product feature reference chart to quickly identify what Vokèra product provides the ideal solution for your heating and domestic hot water requirements.

Product features							
	UNICA MAX C	VISION PLUS C	VIBE MAX C	UNICA MAX S	VISION PLUS S	VIBE MAX S	MYNUTE 20 VHE
10 YEAR WARRANTY	✓	✗	✗	✓	✗	✗	✗
7 YEAR WARRANTY	✗	✓	✗	✗	✓	✗	✗
5 YEAR WARRANTY	✗	✗	✓	✗	✗	✓	✓
ACC (ACTIVE COMBUSTION CONTROL)	✓	✗	✗	✓	✗	✗	✗
EMBEDDED CLOCK	✓	✓	✓	✓	✓	✗	✗
TEXT-DRIVEN MENU	✓	✓	✗	✓	✓	✗	✗
PRESSURE TRANSDUCER	✓	✓	✓	✓	✓	✓	✗
DHW FLOW METER	✓	✗	✓	✗	✗	✗	✗
MODBUS INTERFACE	✓	✓	✓	✓	✓	✓	✗
EXCESS CARBON MONOXIDE (CO) MONITOR	✓	✗	✗	✓	✗	✗	✗
EFFICIENCY INDICATOR	✓	✗	✗	✓	✗	✗	✗
MODBUS COMPATIBLE	✓	✓	✓	✓	✓	✓	✗
FRONT-SERVICING	✓	✓	✓	✓	✓	✓	✗
CONCEALED SERVICE VALVES	✓	✓ <sup>(1)</sup>	✗	✓	✓	✗	✗
LPG/NG (NO KIT REQUIRED)	✓	✗	✗	✓	✗	✗	✗
LPG MODEL / CONVERSION KIT AVAILABLE	✗	✓	✓	✗	✓	✓	✓
COMBUSTION ANALYSIS FUNCTION	✓	✓	✓	✓	✓	✓	✓
BACK LIT LCD DISPLAY	✓	✓	✓	✓	✓	✓	✗
HISTORY RECALL INFORMATION FUNCTION	✓	✓	✓	✓	✓	✓	✗
DHW PREHEAT ON/OFF FUNCTION	✓	✓	✓	✗	✗	✗	✗
AUTOSTOP FUNCTION - 1 MODE OPERATION	✓	✓	✓	✓	✓	✓	✓
OPENTHERM EMBEDDED	✓	✓ <sup>(2)</sup>	✓ <sup>(2)</sup>	✓ <sup>(2)</sup>	✓ <sup>(2)</sup>	✓ <sup>(2)</sup>	✗
HI COMFORT T100 COMPATIBLE	✓	✓	✓	✗	✗	✗	✗
BUILT-IN FILLING LOOP	✓	✓	✓	✗	✗	✗	✗
PRE-HEATED HOT WATER	✓	✓	✓	✗	✗	✗	✗
PRE-FIXING JIG	✓	✗	✗	✗	✗	✗	✗
AUTOMATIC BY-PASS	✓	✓	✓	✓	✓	✓	✗
DIGITAL DIAGNOSTIC CODE DISPLAY	✓	✓	✓	✓	✓	✓	✓
WEATHER COMPENSATION CONTROL OPTION	✓ <sup>(3)</sup>	✓ <sup>(3)</sup>	✓ <sup>(3)</sup>	✓ <sup>(3)</sup>	✓ <sup>(3)</sup>	✓ <sup>(3)</sup>	✗
COMPARTMENT VENTILATION NOT REQUIRED	✓	✓	✓	✓	✓	✓	✓
BUILT-IN FROST PROTECTION	✓	✓	✓	✓	✓	✓	✓
ANTI SEIZE FUNCTION	✓	✓	✓	✓	✓	✓	✓
NO <sub>x</sub> CLASS 6	✓	✓	✓	✓	✓	✓	✗
FAULT DIAGNOSTIC DISPLAY	✓	✓	✓	✓	✓	✓	✓
CLICK FIT FLUE SYSTEM	✓	✓	✓	✓	✓	✓	✗
TELESCOPIC FLUE SYSTEM	✓	✓	✓	✓	✓	✓	✓
TWIN FLUE SYSTEM	✓	✓	✓	✓	✓	✓	✓
VERTICAL FLUE OPTION	✓	✓	✓	✓	✓	✓	✓
REAR FLUE OPTION	✗	✓ <sup>(3)</sup>	✗	✗	✗	✗	✗

# Flue options

## Terminal positions

\* Term 'opening' includes window, air brick etc  
 \*\* Minimum clearance ensures the boiler works safely, however consideration should be made for nuisance factor.



### Flue exit clearances

FLUE EXITS		MINIMUM DISTANCE
A	BELOW AN OPENING*	300MM
B	ABOVE AN OPENING*	300MM
C	TO THE SIDE OF AN OPENING*	300MM
D	BELOW GUTTERS, DRAIN PIPE ETC	25MM
E	BELOW EAVES	25MM
F	BELOW THE LOWEST POINT OF CARPORT ROOF	25MM
G	TO SIDE OF A VERTICAL SOIL/DRAIN PIPE ETC	25MM (60MM FOR 80/125 FLUE)
H	FROM INTERNAL OR EXTERNAL CORNER OR BOUNDARY	25MM (60MM FOR 80/125 FLUE)
I	ABOVE GROUND, ROOF OR BALCONY LEVEL	300MM
J	FROM A SURFACE OR BOUNDARY FACING A TERMINAL	600MM**
K	FROM A TERMINAL FACING A TERMINAL	1200MM
L	FROM AN OPENING IN THE CARPORT INTO THE BUILDING	1200MM
M	VERTICALLY FROM A TERMINAL ON THE SAME WALL	1500MM
N	HORIZONTALLY FROM A TERMINAL ON THE SAME WALL	300MM
P	FROM A STRUCTURE TO THE SIDE OF A VERTICAL TERMINAL	300MM
Q	FROM THE TOP OF A VERTICAL TERMINAL TO THE ROOF FLASHING	AS DETERMINED BY FIXED COLLAR OF VERTICAL TERMINAL
R	TO THE SIDE OF A BOUNDARY	300MM
S	TO THE SIDE OF AN OPENING* / WINDOW ON A PITCHED ROOF	600MM
T	BELOW AN OPENING* / WINDOW ON A PITCHED ROOF	2000MM
V	FROM A VERTICAL TERMINAL TO AN ADJACENT OPENING*	CALL VOKÈRA TECHNICAL SUPPORT FOR ADVICE
W	FROM A VERTICAL TERMINAL TO AN ADJACENT VERTICAL TERMINAL	300MM (ONLY IF BOTH TERMINALS ARE SAME HEIGHT)

Flue systems and terminal locations should be located and installed in accordance with current Building Regulations (UK) or I.S. 813 (ROI).

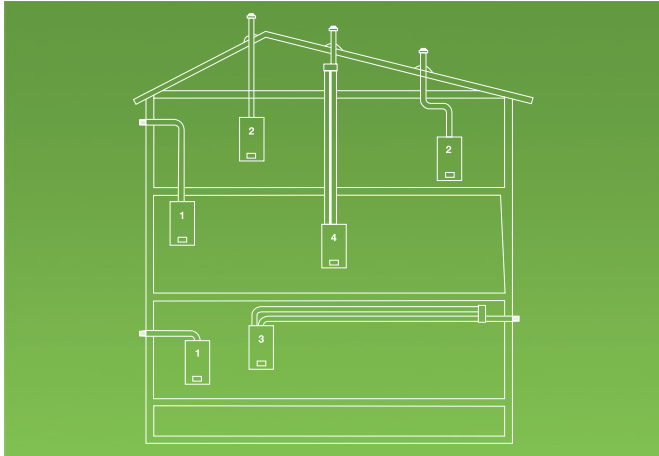
The terminal should be located where the dispersal of combustion products is not impeded and with due regard for the damage and/or discolouration that may occur to building products located nearby.

The terminal must not be located in a place where it is likely to cause a nuisance. Water vapour may condense on leaving the terminal. The effect of such plumeing must be considered.

# Flue options

## Installation options

The flue system installation options as detailed below are not generic for all concentric flues. Please see the boiler and flue compatibility tables for information on specific appliances suitability with the different concentric flue systems.



### Flue system options

CONFIGURATION	DESCRIPTION	COMPATIBLE WITH
1	HORIZONTAL CONCENTRIC	ALL APPLIANCES
2	VERTICAL CONCENTRIC	ALL APPLIANCES
3	HORIZONTAL PARALLEL SYSTEM	ALL APPLIANCES
4	VERTICAL PARALLEL SYSTEM	ALL APPLIANCES

*N.B. A boiler top adaptor/kit is required when using the 80/125mm concentric and 80mm parallel systems.*

The 80mm + 80mm parallel (twin) system enables greater flue lengths to be achieved and can be used in either a horizontal or vertical configuration. However the parallel system must be converted back to a concentric system at the point of termination. Dedicated flue kits are available for this purpose.

An adaptor kit is required to convert the appliance flue outlet from a concentric configuration into a parallel configuration.

The exhaust pipe can reach very high temperatures and so must be adequately protected to avoid contact with persons and / or materials that could be damaged as a result.

The air inlet pipe should be insulated to reduce the possibility of condense forming on the outside of the pipe.

Vokèra can advise that the Gas Safe Technical Bulletin, TB 008, gives specific advice on the requirements for new installations with a flue routed within a void, where appropriate means for the gas engineer to visually check the flue must be incorporated (this is normally achieved by inspection hatches located in the ceiling).

The horizontal flue terminal packs (20122759 and 20122761) include a 'click-fit' 90 degree flue bend (2012901) that can only be used on the appliance, not elsewhere in the flue system. The vertical flue terminal box (20122763) contains a straight click-fit connector (code 20121902).

A 90 degree click fit bend (2012901) should be ordered separately if the flue is to be connected horizontally before terminating with a vertical terminal. A straight appliance connector (code 20121902) must be ordered as a separate item if the flue is to be connected vertically before terminated with a horizontal terminal length.

### 80mm parallel (Twin) flue systems

CODE	
20134830	ADAPTOR KIT FOR 'CLICK FIT' BOILERS
430	ADAPTOR KIT FOR ALL OTHER CONDENSING BOILERS
225805	HORIZONTAL TERMINAL & CONVERTER BOX
225810	VERTICAL TERMINAL & CONVERTER BOX
225820	250MM EXTENSION (PAIR)
225825	500MM EXTENSION (PAIR)
225830	1000MM EXTENSION (PAIR)
225835	2000MM EXTENSION (PAIR)
225840	45° BEND (PAIR)
225845	90° BEND (PAIR)
225850	DOUBLE PIPE BRACKET 80MM X 80MM (5 OFF)
225855	SINGLE PIPE BRACKET 80MM (5 OFF)
225765	FLAT ROOF FLASHING PLATE (390MM DIAMETER)
310	ADAPTOR KIT FOR AQUANOVA
29450178*	CONDENSATE TRAP KIT FOR AQUANOVA
29450176	VERTICAL COLLECTOR FOR AQUANOVA
29450177	HORIZONTAL COLLECTOR FOR AQUANOVA

*\*When ordering this product you will need to also order either the 29450176 or 29450177, depending on your installation requirements.*

For further information and advice please contact  
Vokèra Technical Support on **01727 744000 (option 4)**.



# Boiler and flue compatibility

## 60/100 concentric flue range

The 60/100 condensing range is suitable for all current Vokèra high efficiency (condensing) appliances.

When used in the horizontal plane, the flue system (excluding horizontal terminal) should be installed so that it has a 3° fall-back to the boiler (51mm per metre). This will enable any condensate fluid that may form, to drain via the condensate connection/trap.

It can also be used as a replacement flue system on older / obsolete Vokèra HE appliances, however you should contact the Vokèra Technical Support for specific advice.

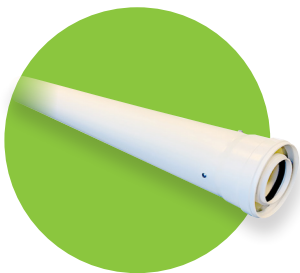
### 60/100mm concentric flue systems

CODE	FEATURE	UNICA MAX C	VISION PLUS C	VIBE MAX C	UNICA MAX S	VISION PLUS S	VIBE MAX S	MYNUTE 20 VHE
20122761	TELESCOPIC HORIZONTAL FLUE TERMINAL (XT)	✓	✓	✓	✓	✓	✓	✗
20131981	TELESCOPIC HORIZONTAL FLUE TERMINAL	✗	✗	✗	✗	✗	✗	✓
20122759	STANDARD HORIZONTAL FLUE TERMINAL (XF)	✓	✓	✓	✓	✓	✓	✗
20132063	STANDARD HORIZONTAL FLUE TERMINAL	✗	✗	✗	✗	✗	✗	✓
20142842	PLUME MANAGEMENT KIT	✓	✓	✓	✓	✓	✓	✓
29450131	PLUME MANAGEMENT KIT EXTENSION	✓	✓	✓	✓	✓	✓	✓
20132059	90° BEND	✓	✓	✓	✓	✓	✓	✓
20132058	45° BEND (PAIR)	✓	✓	✓	✓	✓	✓	✓
20132060	500MM EXTENSION	✓	✓	✓	✓	✓	✓	✓
20132061	1000MM EXTENSION	✓	✓	✓	✓	✓	✓	✓
20132062	2000MM EXTENSION	✓	✓	✓	✓	✓	✓	✓
20131979	TELESCOPIC EXTENSION	✓	✓	✓	✓	✓	✓	✓
20135587	WALL BRACKETS (5 X 100MM)	✓	✓	✓	✓	✓	✓	✓
20122763	VERTICAL FLUE TERMINAL (XV)	✓	✓	✓	✓	✓	✓	✗
20131983	VERTICAL FLUE TERMINAL	✗	✗	✗	✗	✗	✗	✓
20132050	PITCHED ROOF FLASHING PLATE	✓	✓	✓	✓	✓	✓	✓
20135582	FLAT ROOF FLASHING PLATE	✓	✓	✓	✓	✓	✓	✓
20132064	REAR FLUE TERMINAL	✗	✓ <sup>(1)</sup>	✗	✗	✗	✗	✗
29450130	WHITE NOSE CONE	✓	✓	✓	✓	✓	✓	✓
20142841	45° PLUME DIVERTER	✓	✓	✓	✓	✓	✓	✓
20121903	VERTICAL ADAPTOR (CLICK FIT)	✓	✓	✓	✓	✓	✓	✗
20121901	90° APPLIANCE BEND (CLICK FIT)	✓	✓	✓	✓	✓	✓	✗

(1) Models 25C & 30C only.



Horizontal flue terminal (XF)  
60/100mm concentric flue  
Code: 20122759



1000mm extension  
60/100mm concentric flue  
Code: 20132061



45° plume diverter  
60/100mm concentric flue  
Code: 20142841



Plume management kit  
60/100mm concentric flue  
Code: 20142842

# Boiler and flue compatibility

## 80/125 concentric flue range

An adaptor is also required for other appliances to convert the flue outlet from 100mm to 125mm.

When used in the horizontal plane, the flue system (excluding horizontal terminal) should be installed so that it has a 3° fall-back to the boiler (51mm per metre). This will enable any condensate fluid that may form, to drain via the condensate connection/trap.

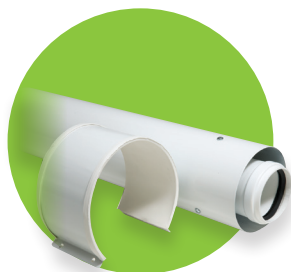
### 80/125mm concentric flue systems

CODE	FEATURE	UNICA MAX <sup>(1)</sup>	VISION PLUS C	VIBE MAX C	EVOLVE S <sup>(1)</sup>	VISION PLUS S	VIBE MAX S	MYNUTE 20 VHE
413	HORIZONTAL TERMINAL	✓	✓	✓	✓	✓	✓	✓
414	VERTICAL TERMINAL	✓	✓	✓	✓	✓	✓	✓
415	90° BEND	✓	✓	✓	✓	✓	✓	✓
416	45° BEND (SINGLE)	✓	✓	✓	✓	✓	✓	✓
417 <sup>(1)</sup>	250MM EXTENSION	✓	✓	✓	✓	✓	✓	✓
418	500MM EXTENSION	✓	✓	✓	✓	✓	✓	✓
419	1000MM EXTENSION	✓	✓	✓	✓	✓	✓	✓
420	2000MM EXTENSION	✓	✓	✓	✓	✓	✓	✓
422 <sup>(1)</sup>	TELESCOPIC EXTENSION	✓	✓	✓	✓	✓	✓	✓
423	WALL BRACKETS (5 X 125MM)	✓	✓	✓	✓	✓	✓	✓
424	BOILER TOP ADAPTOR FOR HE APPLIANCES	✓	✓	✓	✓	✓	✓	✓
425 <sup>(1)</sup>	FIXED OFFSET	✓	✓	✓	✓	✓	✓	✓
426	SILICON LUBRICANT	✓	✓	✓	✓	✓	✓	✓
20135582	FLAT ROOF FLASHING PLATE	✓	✓	✓	✓	✓	✓	✓
20132050	PITCHED ROOF FLASHING PLATE	✓	✓	✓	✓	✓	✓	✓

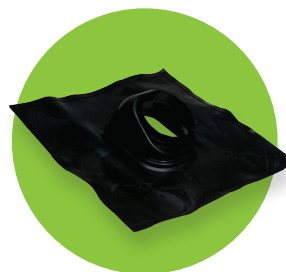
*(1) Contact Vokera Technical Support for advice.*



90° bend / 45° bend  
80/125mm concentric flue  
Code: 415 / 416



500 / 1000 / 2000mm extension  
80/125mm concentric flue  
Code: 418 / 419 / 420



Pitched roof flashing plate  
80/125mm concentric flue  
Code: 20132050



Flat roof flashing plate  
80/125mm concentric flue  
Code: 20135582

# Choosing the right control

## Intelligent controls

### Maximise energy and fuel savings

With the introduction of condensing technology, boilers have continued to increase in efficiency with most current appliances able to reach over 90% efficiency. However, the technology within boilers is now so advanced that, even with future developments, there is little chance of boiler efficiency percentages increasing much further.

The one area that can still help maximise the efficiency and overall performance of the boiler is the correct use of a control. Even with average efficiencies now reaching over 90%, this can be increased by a further 2%, with the simple addition of an outside weather compensation sensor for example.

### Choosing the right control

There are a number of different controls available so establishing the most suitable one for your heating requirements may be confusing. Vokèra provide a range of controls that can be used with combi and system boilers, including: room thermostats, programmable room thermostats and the Hi, Comfort range that incorporates the most advanced technology available, such as weather compensation and OpenTherm.

The Vokèra Unica MAX, Vision Plus and Vibe MAX (via Bluetooth) combi boilers come with a built-in 7 day digital clock which enables different settings for each day of the week. Additional controls can be added to a combi if it needs to be sited in a difficult to access location or for energy saving purposes.

### Controls course

This course can help you understand the principles of combustion and the fundamentals of how control technology can work in conjunction with boiler operation. The course covers the range of Vokèra intelligent and basic controls as well as the new Hi, Comfort T100 Internet enabled thermostat. The course explains how to connect and install the Hi, Comfort T100 as well as the possibilities of remote room temperature, zoning and boiler control and operation.

#### Course Covers:

- Principles of combustion, modulation and boiler operation
- System and radiator design considerations
- Appraisal of existing systems
- Customer considerations
- Hands on training on how to connect Vokèra controls (including Hi, Comfort T100 OpenTherm and weather compensation) to Vokèra boilers
- 'Boiler Plus' scheme.

To book your place on the controls course please call our training co-ordinator on **01727 744002** or email **training@vokera.co.uk**

### Controls Compatibility

CODE	FEATURE	UNICA MAX C	VISION PLUS C	VIBE MAX C	UNICA MAX S	VISION PLUS S	VIBE MAX S	MYNUTE 20 VHE
20193357	HI, COMFORT T100 WI-FI KIT <sup>(1)</sup>	✓	✓	✓	✓ <sup>(2)</sup>	✓ <sup>(2)</sup>	✓ <sup>(2)</sup>	✗
1220559	OUTSIDE WEATHER COMPENSATION SENSOR & CONTROL INTERFACE	✓	✓	✓	✓	✓	✓	✗
20101743	7 DAY RF PROGRAMMABLE ROOM THERMOSTAT	✓	✓	✓	✓ <sup>(2)</sup>	✓ <sup>(2)</sup>	✓	✓ <sup>(2)</sup>
20063874	7 DAY RF PROGRAMMABLE ROOM THERMOSTAT (HARD-WIRED)	✓	✓	✓	✓ <sup>(2)</sup>	✓ <sup>(2)</sup>	✓	✓ <sup>(2)</sup>
20059642	RF ROOM THERMOSTAT CONTROL	✓	✓	✓	✓	✓	✓	✓

(1) Weather compensation – via physical sensor or Internet look up via Hi, Comfort App.

(2) Can be used on heating only applications – contact Vokèra Technical Support for advice.

# Choosing the right control

## Providing energy saving solutions

### How can controls improve the ErP efficiency

Differing types of controls are classified according to the 'uplift' in efficiency it brings to the appliance.

There are eight classes of control system, each adds an efficiency percentage to the boiler seasonal space heating ErP efficiency rating. That is how the package efficiency is calculated. Additional heaters such as a second boiler, heat pump or solar input will also adjust the package efficiency.

**Class I** – On/off room thermostat: A room thermostat that controls the on/off operation of a heater. Performance parameters, including switching differential and room temperature control accuracy are determined by the thermostat's mechanical construction.

**Class II** – Weather compensator control, for use with modulating heaters: A heater flow temperature control that varies the set point of the flow temperature of water leaving the heater dependent upon prevailing outside temperature and selected weather compensation curve. Control is achieved by modulating the output of the heater.

**Class III** – Weather compensator control, for use with on/off output heaters: A heater flow temperature control that varies the set point of the flow temperature of water leaving the heater dependent upon prevailing outside temperature and selected weather compensation curve. Heater flow temperature is varied by controlling the on/off operation of the heater.

All Unica MAX combis plus class VI controls (Hi, Comfort T100 with OpenTherm and weather compensation – via physical sensor or Internet look up) achieves an ErP A+ (98%) space heating package rating.

**Class IV** – TPI room thermostat, for use with on/off output heaters: An electronic room thermostat that controls both thermostat cycle rate and in-cycle on/off ratio of the heater proportional to room temperature. TPI control strategy reduces mean water temperature, improves room temperature control accuracy and enhances system efficiency.

**Class V** – Modulating room thermostat, for use with modulating heaters: An electronic room thermostat that varies the flow temperature of the water leaving the heater dependent upon measured room temperature deviation from room thermostat set point. Control is achieved by modulating the output of the heater.

**Class VI** – Weather compensator and room sensor, for use with modulating heaters: A heater flow temperature control that varies the flow temperature of water leaving the heater dependent upon prevailing outside temperature and selected weather compensation curve. A room temperature sensor monitors room temperature and adjusts the compensation curve parallel displacement to improve room comfort. Control is achieved by modulating the output of the heater.

**Class VII** – Weather compensator and room sensor, for use with on/off output heaters: A heater flow temperature control that varies the flow temperature of water leaving the heater dependent upon prevailing outside temperature and selected weather compensation curve. A room temperature sensor monitors room temperature and adjusts the compensation curve parallel displacement to improve room comfort. Heater flow temperature is varied by controlling the on/off operation of the heater.

**Class VIII** – Multi-sensor room temperature control, for use with modulating heaters: An electronic control, equipped with three or more room sensors that varies the flow temperature of the water leaving the heater dependent upon the aggregated measured room temperature deviation from room sensor set points. Control is achieved by modulating the output of the heater.

### Controls and ErP classifications

CODE	DESCRIPTION	CLASS I	CLASS II	CLASS III	CLASS IV	CLASS V	CLASS VI	CLASS VII	CLASS VIII
20059642	RF ROOM THERMOSTAT CONTROL	✓	✗	✗	✗	✗	✗	✗	✗
20193357	HI, COMFORT T100 WI-FI KIT	✗	✗	✗	✗	✓	✓ <sup>(1)</sup>	✗	✓ <sup>(2)</sup>
20101743	7 DAY RF PROGRAMMABLE ROOM THERMOSTAT	✓	✗	✗	✗	✓ <sup>(3)</sup>	✗	✗	✗
20063874	7 DAY RF PROGRAMMABLE ROOM THERMOSTAT (HARD-WIRED)	✓	✗	✗	✗	✓ <sup>(3)</sup>	✗	✗	✗
1220559	OUTSIDE WEATHER COMPENSATION SENSOR & CONTROL INTERFACE	✗	✓	✗	✗	✗	✓ <sup>(4)</sup>	✗	✗
PACKAGE/SYSTEM EFFICIENCY LABEL - UPLIFT		1%	2%	1.5%	2%	3%	4%	3.5%	5%

(1) Weather compensation – via physical sensor or Internet look up via Hi, Comfort App. (2) When three or more zones in OpenTherm configuration. (3) When in OpenTherm configuration. (4) When used with modulating room thermostat.



**Hi, COMFORT is the new connected digital infrastructure designed to deliver a brand new home comfort experience.**

**Hi, Comfort**



Not just an App or a family of smart devices, but a new way to manage comfort inside the home, putting people at the heart of the system.

With Hi, COMFORT connected solutions you can fully exploit the features of your heating system, saving money and live in a "smart" environment.

Hi, COMFORT family is in continuous evolution and new solutions and services are frequently added to make you experience even "smarter" and more unique.



Control home heating from anywhere, via smartphone or tablet



Compatible with the majority of boiler brands, not just Vokèra (T100 only)



Manage up to 8 different heating zones from anywhere in the world (T100 only)



Weather compensation adjusts boiler output to reflect ambient climate



Programme up to 3 comfort levels, suiting mood or pocket (T100 only)



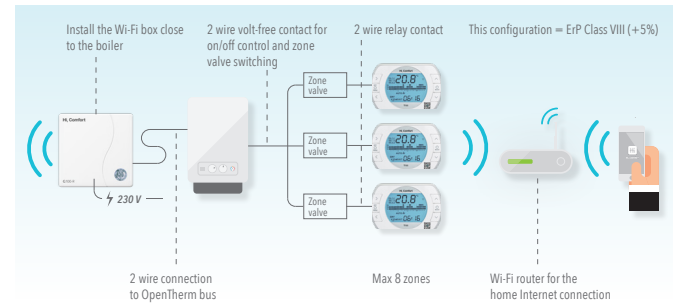
Hi, Comfort alerts the customer if something goes wrong, minimising disruption

Learn more about Hi, Comfort at [www.hi-comfort.com/en/](http://www.hi-comfort.com/en/)

## Typical OpenTherm multi-zone configuration

Programmable Wi-Fi Thermostat for Zone

Valve Control and Boiler OpenTherm Connection



Scan the QR code to watch the video



### Hi, Comfort Accessories:

CODE		DESCRIPTION
20193357		<b>HI, COMFORT T100 WI-FI</b> COMPLETE KIT FOR WI-FI INSTALLATION, CONTAINING THE T100 THERMOSTAT AND G100-W GATEWAY. PACKAGE INCLUDES BATTERIES, CABLES, POWER ADAPTOR, SCREWS, FIXINGS, DOUBLE-SIDED TAPE, MAGNETIC TAPE AND TECHNICAL INSTRUCTIONS.
20193352		<b>HI, COMFORT T100</b> ROOM THERMOSTAT T100 IDEAL FOR REPLACEMENT AND NEW BUILDINGS, BOTH FOR SINGLE ZONE AND FOR MULTI-ZONES APPLICATION. THE T100 CAN BE CONNECTED TO THE INTERNET COUPLED WITH HI, COMFORT G100-W (OPTIONAL). PACKAGE INCLUDES BATTERIES, SCREWS, FIXINGS, DOUBLE-SIDED TAPE AND TECHNICAL INSTRUCTIONS.
20168501		<b>HI, COMFORT K100 SMART KEY<sup>(1)</sup></b> THE K100 IS A GATEWAY THAT CONNECTS TO HOME WI-FI. ONCE PAIRED WITH THE HI, COMFORT APP AND THE BOILER, THE USER CAN: SET THE DOMESTIC HOT WATER TEMPERATURE, SET THE TEMPERATURE OF THE HEATING SYSTEM, TURN OFF THE HEATING SYSTEM, MONITOR THE OPERATING HOURS OF THE BOILER.
20193355		<b>HI, COMFORT G100-W</b> THE G100-W GATEWAY IS THE DEVICE PERMITTING INTERNET CONNECTION THROUGH THE HOME WI-FI NETWORK. IT ALSO ALLOWS AN OPENTHERM CONNECTION WITH THE BOILER FOR ADVANCED REMOTE CONTROL. PACKAGE INCLUDES CABLES, POWER ADAPTOR AND, DOUBLE-SIDED TAPE.
20193356		<b>HI, COMFORT G100-R</b> RADIO-FREQUENCY (RF) BASED DEVICE ALLOWING WIRELESS CONNECTION OF THE T100 TO THE BOILER (BOTH FOR ON/OFF OR THROUGH THE OPENTHERM BUS). IT CAN BE USED AS WELL WHEN A POOR WI-FI SIGNAL PREVENTS THE INSTALLATION OF THE G100-W GATEWAY CLOSE TO THE BOILER.

(1) Compatible with Vibe MAX C

For more information and technical details please contact Vokèra Technical Support or visit: [www.hi-comfort.com/en/](http://www.hi-comfort.com/en/)

# Choosing the right control

## Intelligent energy saving controls

### Outside weather compensation sensor



The outside weather compensation sensor manages the central heating temperature by regulating the boiler flow temperature depending on the external weather conditions, providing a consistent and comfortable room temperature.

All current Vokèra combination boiler models can have dual temperature weather compensation, meaning that

by simply purchasing the external sensor, the homeowner can benefit from even further energy savings.

The weather compensation sensor can also be installed in conjunction with the Vokèra OpenTherm programmable room thermostat which will further enhance energy savings.

### 7 day RF programmable room thermostat



This on / economy / off programmable room thermostat allows easy control over boiler heating timings and temperatures over a 7 day period. It has been developed to work with our current range of appliances<sup>(1)</sup> and is also compatible with several discontinued products.

RF (wireless) and hard-wired versions are available to ensure a simple installation to both new boilers and as a replacement for existing wired controls. This room thermostat can be configured as a 7 day programmer, a 5+2 day programmer with up to 24 temperature changes a day or as an untimed room thermostat.



OpenTherm Inside

*(1) See 'Controls Compatibility' table on p28. For discontinued product compatibility please contact Vokèra Technical Support. (2) Contact Vokèra Technical Support for advice.*

### RF room thermostat control



This on / off room thermostat has similar characteristics to the 7 day RF programmable room thermostat as it can be used to adjust the set room temperature.

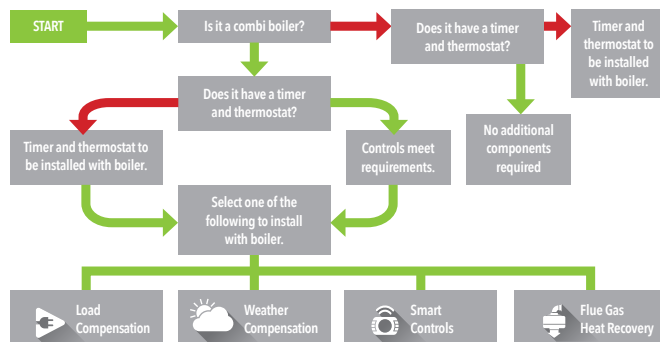
It is ideal for a combi boiler as this optional room thermostat can be installed in a convenient location so that the user can easily adjust their heating

temperature, without interfering with any programmed heating timings that have been set on the boiler's built-in 7 day digital clock.

It is also compatible with all the current Vokèra ranges and can be used on older appliances that incorporate an integral clock.<sup>(2)</sup>

### Boiler Plus

Since April 2018 legislation is in effect to raise efficiency standards of domestic heating for England.

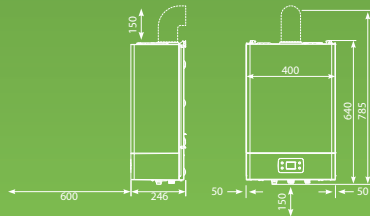


# AquaNova LE

## Instantaneous multipoint water heater



Dimensions and Clearances (mm)



\*From casing or 25mm above flue elbow (whichever is applicable)

### Specifications

### AQUANOVA LE

PRODUCT ORDER CODE (NATURAL GAS)	20143490
PRODUCT ORDER CODE (LPG)	20143493
DOMESTIC HOT WATER	
MAXIMUM HEAT INPUT (kW)	30.0
FLOW RATE - 35°C RISE (L/MIN)	13.2
WEIGHT	
DRY WEIGHT (KG)	21
EFFICIENCY	
ErP WATER HEATING EFFICIENCY (XL PROFILE) (CLASS/%)	A/82.0

NB: For every 60/100mm concentric flue 45° and 90° bend deduct 1.5m from flue length.  
For every twin flue 45° and 90° bend deduct 1m from the flue length.

### Flue lengths

### AQUANOVA LE

#### FLUE DETAILS (CONCENTRIC)

MAX HORIZONTAL FLUE LENGTH (60/100MM)	2.6M
MAX VERTICAL FLUE LENGTH (60/100MM)	3.6M

#### FLUE DETAILS (TWIN PIPES)

MAX HORIZONTAL FLUE LENGTH (80MM/80MM)	6M/6M + TERMINAL
MAX VERTICAL FLUE LENGTH (80MM/80MM)	6M/6M + TERMINAL

### Horizontal and vertical flue options (60/100)

COMPONENT	DESCRIPTION	CODE
	HORIZONTAL FLUE TERMINAL	20163408
	90° BEND	20163333
	45° BEND (PAIR)	20163332
	750MM EXTENSION	20163392
	1500MM EXTENSION	20163394
	WALL BRACKETS (5 X 100MM)	20135587
	VERTICAL FLUE TERMINAL	20163423
	PITCHED ROOF FLASHING PLATE	20132050
	STANDARD JOINT CLIPS (100MM X 45MM)	20163425
	LONG JOINT CLIPS (100MM X 80MM)	2359169

(1) Subject to registration and annual service, terms and conditions apply.  
(2) Consider depth of boiler model.



ErP Compliant



2 Year Warranty<sup>®</sup>



Instant Hot Water



High Flow Rate

# Air Source Heat Pumps and indirect unvented cylinders



## Outputs (kW): 4 - 6 - 8 - 10 - 12 - 14 - 16

The Riello NXHM air source heat pumps are ideal for new build and retrofit applications, and with their minimal installation preparation they are an increasingly popular renewable technology. Utilising ambient air and upgrading it to a more useful temperature between 35°C and 65°C <sup>(1)</sup> makes NXHM a perfect solution for underfloor heating systems, oversize radiators, domestic hot water and heating swimming pools.

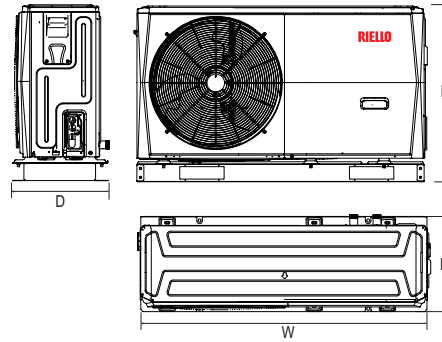
NXHM heat pumps have a coefficient of performance of up to 5.1 (1kW of electricity used to generate 5.1kW of heat). It is supplied with built-in external sensor, supplementary external sensor and remote control to maximise efficiency.

The new NXHM supplied with R32 refrigerant helps the unit operate more sustainably and effectively. Thanks to lower Global Warming Potential (GWP) and reduced charge volume, R32 provides the perfect solution being not only more environmentally friendly having lower CO<sub>2</sub> emissions but also higher energy efficiency in comparison with standard refrigerant e.g. R410A. Three-phase versions for 12, 14 and 16kW units.

- MCS Certified
- ErP Class A++ (55°C) / A+++ (35°C)
- Coefficient of performance (CoP) up to 5.1
- Ideal for new build and retrofit applications
- Simple installation with minimum installation preparation
- Ideal for underfloor heating, oversize radiators, DHW and heating swimming pools
- High performance, achieving temperatures up to 65°C <sup>(1)</sup>
- Design service available

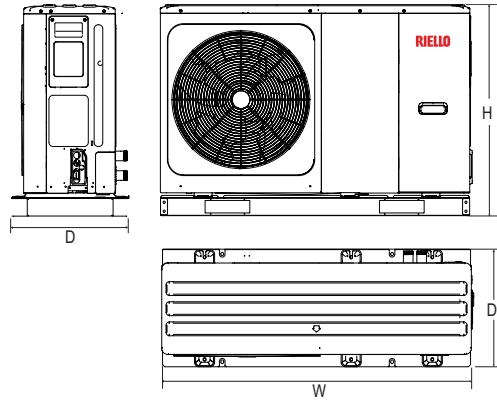
<sup>(1)</sup> Max heating flow temp is 60°C and max hot water flow temp is 65°C

NXHM 004-006



Width: 1295mm  
Depth: 429mm  
Height: 792mm

NXHM 008-016



Width: 1385mm  
Depth: 526mm  
Height: 945mm

### Dimensions

	uom	4	6	8	10	12
PRODUCT CODE		20191936	20191940	20191942	20191943	20191944
W - WIDTH	MM	1295	1295	1385	1385	1385
D - DEPTH	MM	429	429	526	526	526
H - HEIGHT	MM	792	792	945	945	945
NET WEIGHT	KG	98	98	121	121	144

### Dimensions

	uom	14	16	12T	14T	16T
PRODUCT CODE		20191945	20191946	20191947	20191948	20191949
W - WIDTH	MM	1385	1385	1385	1385	1385
D - DEPTH	MM	526	526	526	526	526
H - HEIGHT	MM	945	945	945	945	945
NET WEIGHT	KG	144	144	160	160	160



## Condensing commercial boiler



### Outputs (kW): 57 – 131 (cascades up to 1.1MW)

The Condexa Pro is Vokèra by Riello's range of condensing light commercial boilers. These fully modulating condensing boilers are available in 6 models (57 P, 70 P, 90, 100, 115 & 135). The Condexa Pro is extremely versatile and is suitable for a wide range of commercial applications, including churches, schools, offices, hotels and many more. The flexible nature of the Condexa Pro means it can easily integrate with renewable solutions to maximise energy savings.

- New condensing heat exchanger in stainless steel
- Complete pre-mix combustion and low NOx emissions: Class 6 (EN 15502)
- It is possible to cascade up to 1120kW (using the embedded 'Managing/Dependant' control logic)
- Thanks to our embedded 'Managing/Dependant' control logic, any boiler can be configured either as the 'Managing' or as a 'Dependant' boiler within the cascade (same product code)
- All boilers have built-in thermoregulation with external probe supplied as standard
- It is possible to combine Condexa Pro boilers in linear or back-to-back cascade applications
- It is possible to use either low energy pumps (also  $\Delta t$  logic) or 2-way valves on the primary circuit
- Modulating and modular power regulation
- Automatic burner ignition sequence reversal (at adjustable steps)
- Simultaneous control of two different circuits: DHW tank and high temperature

- Management of up to 16 zones through an optional kit
- Automatic summer/winter switch-over
- 'Anti-legionella' function as standard
- Suitable for remote control management (0-10V input or Modbus) via optional kit
- Availability of a wide range of accessories and flue options for complete configurations
- Can be converted to LPG through LPG kit supplied as standard

Our Condexa Pro models 90, 100, 115 and 135 are listed on the ECA Energy Technology List (ETL), allowing end client businesses to claim tax relief on the boiler. To discuss your project with Vokèra by Riello's dedicated commercial team, email: [commercial@vokera.co.uk](mailto:commercial@vokera.co.uk)

NG code	Model	Dimensions H x W x D (mm)	Flue gas (Ømm)	Input min-max ncv* (gcv)**(kw)	Class
20115223	CONDEXA PRO 57 P	1000 X 600 X 435	80	14.0 - 57.0 (63.0)	A
20115224	CONDEXA PRO 70 P	1000 X 600 X 435	80	14.0 - 68.0 (76.0)	A
20115225	CONDEXA PRO 90	1000 X 600 X 435	110	19.4 - 90.0 (100.0)	A
20115226	CONDEXA PRO 100	1000 X 600 X 435	110	19.4 - 97.0 (108.0)	A
20115228	CONDEXA PRO 115	1170 X 600 X 435	110	22.4 - 112 (124.0)	
20115229	CONDEXA PRO 135	1170 X 600 X 435	110	26.2 - 131 (146.0)	

(\*) NCV = Net Calorific Value or Lower Calorific Value (NCV)

(\*\*) GCV = Gross Calorific Value or Higher Calorific Value (HCV)



5 Year Warranty



Cascade Up To 1.1MW

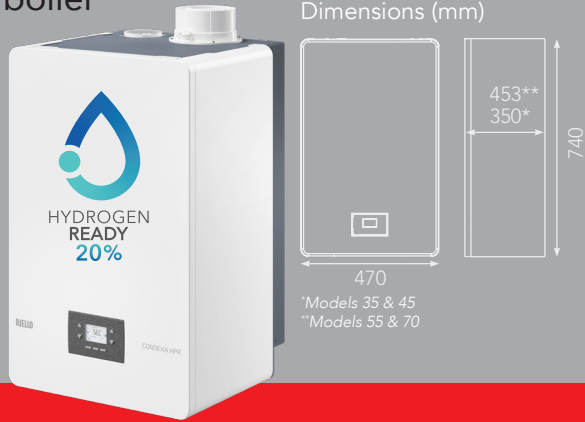


Gas or LPG



NO<sub>x</sub> Class 6

# Condensing light commercial boiler



## Outputs (kW): 35 – 70 (cascades up to 280kW)

Thanks to both to the compact design and the reduced weight, Condexa HPR is the ideal answer in all those situations where space is a critical factor for the choice of heat generator.

The range consists of 4 condensing models, from 35 up to 70 kW, that can be configured as both stand alone or as a cascade installation of up to 4 thermal modules with either LINEAR or BACK-TO-BACK configurations, reaching up to 280kW. There are 28 possible configurations in total.

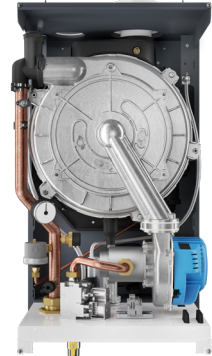
Range suitable both for indoor and partially covered external environments (IPX5D) as well as being equipped with low consumption modulating pumps as standard.

To support the designer in identifying the best solution, Riello has developed a configuration software to support the selection process of accessories specifically developed for this system.

- New stainless steel heat exchanger with low water content
- It is possible to combine Condexa HPR boilers in linear or back-to-back cascade applications
- Sealed chamber configuration as standard
- Premixed burner with low emissions
- Compact and lightweight structure
- Complete front accessibility for maintenance operations

35 & 45 kW

55 & 70 kW

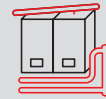


NG code	Model	Dimensions H x W x D (mm)	Nominal heat output 80/60°C (50/30°C)	Class
20199400	CONDEXA HPR 35	740 X 470 X 350	4.98 - 33.99 (37.31)	A
20199401	CONDEXA HPR 45	740 X 470 X 350	4.98 - 43.88 (47.30)	A
20190067	CONDEXA HPR 55	740 X 470 X 453	7.87 - 53.60 (58.25)	A
20190068	CONDEXA HPR 70	740 X 470 X 453	7.87 - 68.20 (74.19)	A



STAND ALONE CONFIGURATION

4



LINEAR CASCADE CONFIGURATION

12



BACK-TO-BACK CASCADE CONFIGURATION

12



5 Year Warranty



Cascade Up To 280kW



Gas or LPG



NO<sub>x</sub> Class 6

## Modular floor standing gas condensing system

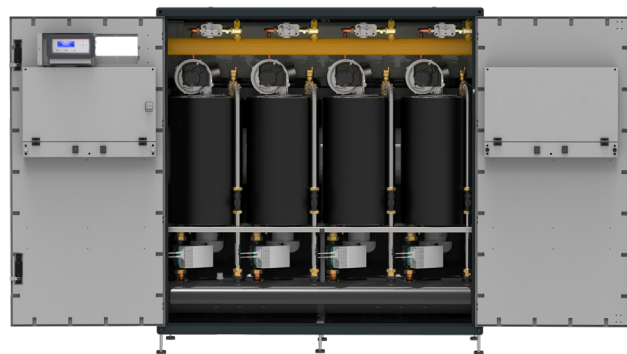


Steel Pro Power is a modular floor standing gas condensing system, conceived and developed with the aim of maximising flexibility and simplicity of installation, ensuring the continuity of service typical of modular systems. With a wide range of accessories, Steel Pro Power can be installed either in single configuration (from 114 up to 540kW) or in cascade (from 655 up to 1310kW). The cabinets consist of an anodised aluminium frame assembly and painted panels containing 2,3 or 4 heat engines (depending on the model). All models are internally equipped with hydraulic, gas, condensate and flue exhaust manifolds. The power supplied by the individual modules is managed with the new electronics control, compatible with the Modbus protocol.

- In conformity with Directive 2009/125/EC
- Condensing modular thermal units for indoor applications (outdoor with optional kit) consisting of painted technical cabinet, heat engines from 57kW up to 131kW and system accessories
- Low emissions, NO<sub>x</sub> Class 6 (EN 15502)
- Linear or curved climatic adjustment, in combination with the external sensor
- Management of cascade modules inside the cabinet
- Management of boiler cascades with Managing / Dependant logic
- Power control for operation a  $\Delta t$  constant
- ACS production management and direct circuit
- It is possible to expand the system through accessory control with additional heating zones (direct / mixed)

- Modulating pumps control (PWM / 0-10 V)
- Remote management via Modbus
- External power control via 0-10 V input
- Control panel features a multilingual, multi-level tree menu
- Management of user profiles protected by a password
- Large backlit screen, 255×80 pixels
- Management of weekly time schedules
- Boiler error history

Description	Power [kW]			Efficiency %			Code
	USEFUL 80°/60° MAX	USEFUL 50°/30° MAX	MIN-MAX	NET AT NOMINAL OUTPUT (80/60°C)	USEFUL PN (50/30°C)	USEFUL 30% PN (50/30°C)	
SPP 114-2 P	111.4	123.8	13.7-114	97.7	108.6	109.4	20138572
SPP 140-2 P	134.0	147.8	13.7-136	98.5	108.1	109.3	20138573
SPP 180-2 P	176.6	194.8	19.4-180	98.1	108.3	108.9	20138574
SPP 230-2 P	219.6	242.2	22.4-223.2	98.4	108.6	108.9	20138575
SPP 270-2 P	258.0	284.2	26.3-262	98.5	108.3	109.4	20138576
SPP 300-3 P	285.9	315.3	19.4-291	98.2	108.2	108.9	20138577
SPP 345-3 P	329.4	363.6	22.4-334.8	98.4	108.6	108.9	20138578
SPP 405-3 P	387.0	426.3	26.3-393	98.5	108.3	109.4	20138579
SPP 460-4 P	439.2	484.4	22.4-446.4	98.4	108.6	108.9	20138580
SPP 540-4 P	516.0	568.4	26.3-524	98.5	108.3	109.4	20138581



5 Year Warranty



Up To 1.3MW



Pre-Built Unit

NO<sub>x</sub> Class 6

# How to contact us



## Technical

technical@vokera.co.uk  
01727 744028



## Training

training@vokera.co.uk  
01727 744002



## Spares

spares@vokera.co.uk  
01727 744000



## Customer Care

service@vokera.co.uk  
01274 866100



## Sales

sales@vokera.co.uk  
01727 744000



## Marketing Support

marketing@vokera.co.uk



## Pre Sales

pre-sales@vokera.co.uk



## Vokera Affinity

affinitysupport@vokera.co.uk  
01727 744044  
www.vokeraaffinity.co.uk

# Useful contacts



## Gas Safe Register

Tel: 0800 408 5577  
Web: www.gassaferegister.co.uk



## Heating and Hotwater Industry Council

Tel: 01926 513777  
Web: www.hhic.org.uk



## Benchmark

Tel: 01926 513777  
Web: www.hhic.org.uk



## Chartered Institute of Plumbing and Heating

Engineering (CIPHE)  
Tel: 01708 472791  
Web: www.ciphe.org.uk



Registered address:

**Vokèra Limited**

Riverside Industrial Estate  
London Colney  
Herts AL2 1HG

enquiries@vokera.co.uk  
www.vokera.co.uk

**Sales, General Enquiries:**

T 01727 744000  
F 0844 391 0998

**Vokèra Ireland**

Westcourt Business Park  
Callan  
Kilkenny R95 PW40

marketing@vokera.co.uk  
www.vokera.ie

**Sales, General Enquiries:**

T 056 775 5055  
F 056 775 5060



© 2022 Vokèra Limited. We reserve the right to change specification without prior notice. Consumers statutory rights are not affected. All rights reserved.  
E&OE. 12/22 FAB/NM

A Carrier Company. Company Reg No: 1047779

