

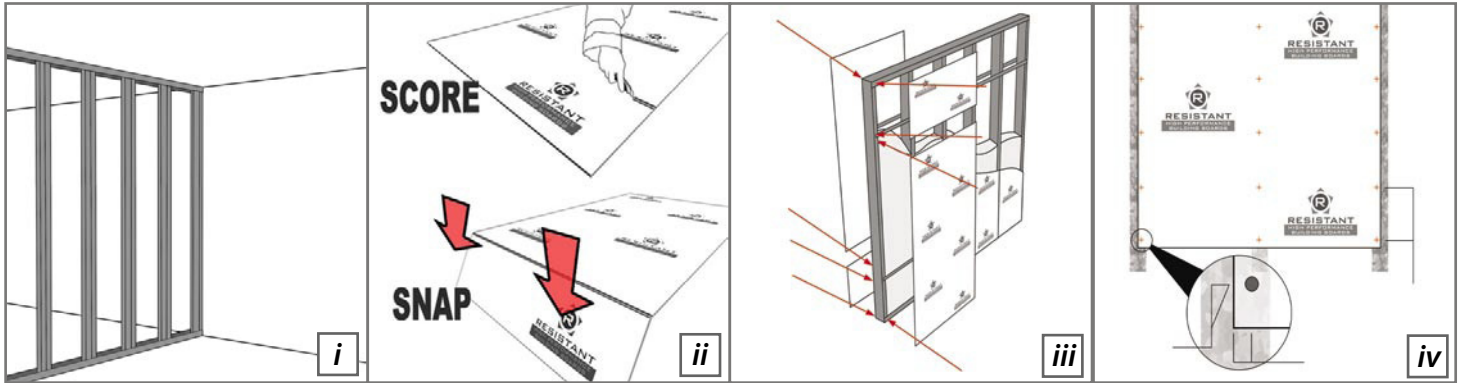


multi-pro XS

RESXSFG0310/001



Fixing Guide



PREPARATION

Studwork

Resistant boards can be attached to either timber or steel studwork, depending on the nature of the job. The layout out of the partition is similar for both systems (figure i). When connecting to timber structure always ensure that the timber has been kiln dried. Never locate adjacent or fix our boards to timbers which have a moisture content in excess of 16%.

Fixings

Stainless steel screws or nails can be used to fix multi-pro XS board.

Cutting

In the case where boards may need to be custom cut to size, sheets are easily cut using the 'Score & Snap' method (figure ii). Mark out the desired size on the board with a pencil and rule. Score along the with a utility knife, making sure to slice the glass fibre mesh, then simply press the board downwards snapping it at the 'Score & Snap' line. Smooth and tidy up the edges with a light abrasive. For areas of fittings and fixtures, cut outs should be done before installing the board.

Resistant recommend the use of a dust mask and eye protection at all times.

FIXING

Wall Attachment

Resistant board are attached onto the vertical studs in a symmetrical fashion each side of the partition (figure iii). They should be attached vertically on the subframe, with fixings at 300mm maximum centres vertically and 600mm maximum centres horizontally. Space fixings a minimum of 10mm from the edge and 20mm from the corner of the board (figure iv & large diagram page 2).

When fixing, start at the centre and work outwards to prevent distortion within the boards. Boards should be offset so that four corners never meet at one point.

Boards can be closely butt jointed for internal wall lining or for timber frame external racking panel manufacture a 2mm fitting gap should be left between. A minimum 6mm gap should be left above the finished floor level to allow for any settlement of the frame.

Finish

Resistant Multi-pro XS can be faced with Plastisol Steel, GRP, acrylic based render systems or brick slips. This provides any designer with unlimited options.

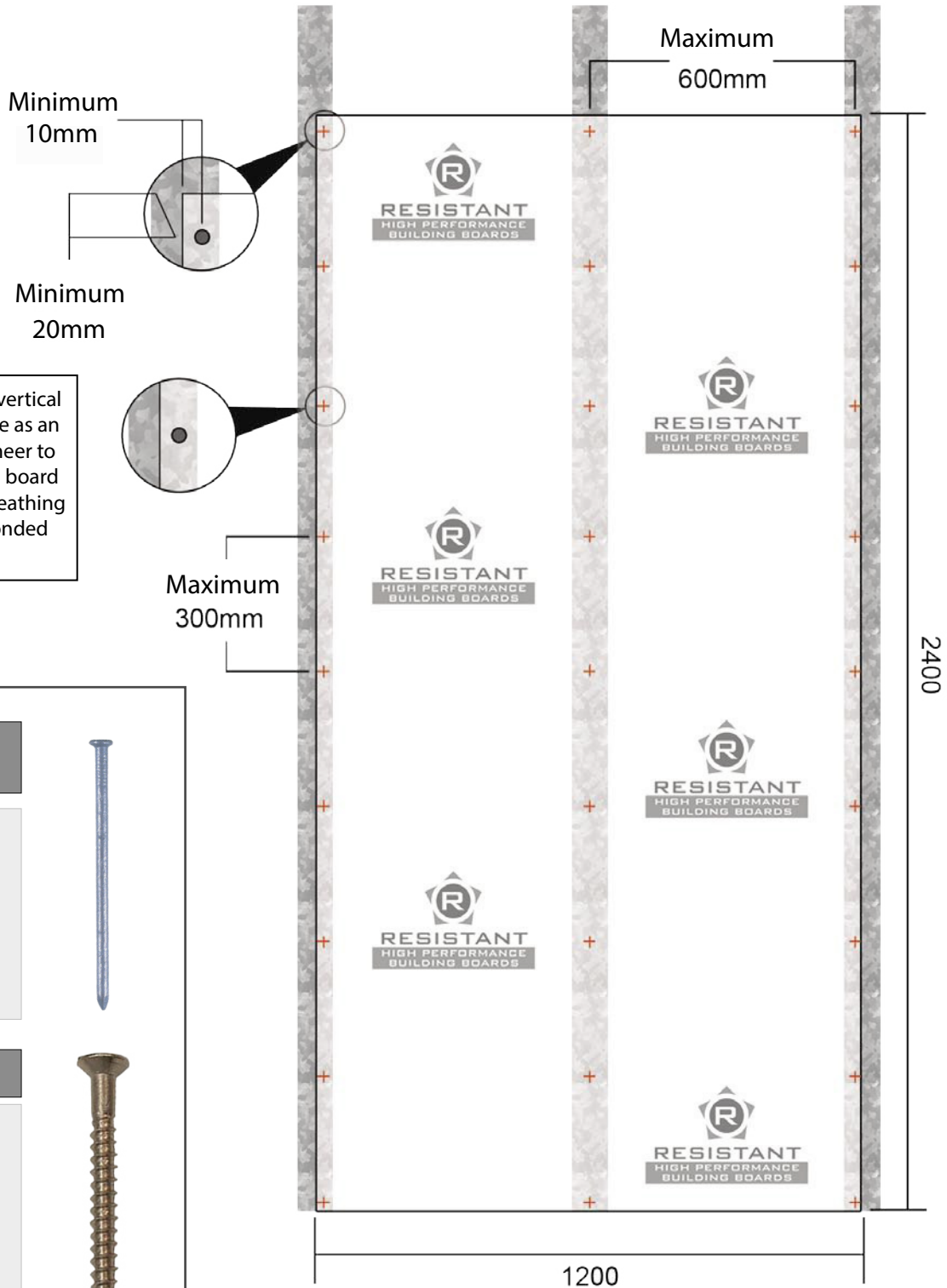


*multi-pro*XS



RESXSFG0310/002



Fixing Guide



Please note guidance stated for vertical fixing centres is maximum for use as an internal wall lining. Project engineer to specify fixing distances for when board is used as a structural racking sheathing board or as a component of a bonded cladding panel.

Timber Frame Gun Nail	
Stainless Steel	
2.8 x 50mm	
Timber Stud	
Wood Screw	
Self Taping	
Countersunk head	