



**NEW
REWARDS**

Chance to win with
every purchase!

composite-prime.com/rewards



Composite Prime®

Natural Evolution

abzorbit™

HD DECK® **pro**

HD DECK® **XS**

HD CLAD® **PRO**

HD DECK® **DUAL DWT**

HD **PROTECT™**

II TOUCHSTONE®
FLOORING

HD DECK® **3D**

A perfect partnership

Composite Prime was established in 2014 by **Domenic Harrison** and **Charles Taylor**. Composites came quite naturally to the two entrepreneurs due to their families' history in the plastics and timber industries.

The Harrison family has a history in the plastics sector. Geoff Harrison, a stalwart of the field, was a founding member of Polypipe Plc with Kevin McDonald in 1980.

The Taylor family has been established in the timber industry for more than 60 years, with Charles being a third generation timber merchant.

Both highly experienced in their respective fields, Domenic and Charles have created the perfect partnership with Composite Prime's unique formula of wood-plastic decking and cladding, as well as a pioneering range of innovative flooring, cleaning products and accessories.



Composite Prime[®]

Natural Evolution

composite

adjective Made up of several elements.

prime

adjective Of the best possible quality.

The Cow and Calf Rocks in Ilkley where we are based, inspired our philosophy that 'the sky's the limit' when it comes to developing new products.



Our ethos

Using our combined heritage, we strive to deliver more innovative, eco-friendly products to market.



Manufacturing process

We start the process by testing each batch of raw materials to ensure they meet our stringent quality control parameters. Using the **latest technology** in our state-of-the-art factory, we blend the components together to create a finished product that's **engineered to perform**. We test and inspect every production batch to ensure that it meets our specification criteria before we clean and package it. The end result is our guaranteed quality products that are **designed to last**.

Why choose Composite Prime?

Our range of *HD Deck®*, *HD Clad®* and *Touchstone Flooring™* composite products feature a range of benefits that will keep your home and garden looking fantastic for years to come. We are proud that all our products are truly **eco-friendly** and have been sourced and manufactured using **socially responsible** methods.

HD Deck® and *HD Clad®* are low maintenance and **durable alternatives to traditional timber**. Our boards are extra hard-wearing and don't need to be coated with life-extending oils and paints. Their unique formula also means that they won't rot or splinter, making them extra safe for children and animals.



Socially Responsible



We're confident in the quality of our *HD Deck®* and *HD Clad®* composite products because we know the origin and species of the tree in our wood flour.

Eco-Friendly

Our wood flour is

**FSC® 100%
CERTIFIED TIMBER**

from responsible sources

Strong and Durable

Composite Prime® uses

**QUALITY OAK
WOOD FLOUR**

a hardwood that's perfect for wood composites

Environmentally Friendly

We've saved
the equivalent of

151 MILLION

plastic milk bottles
from landfill

We've recycled
the equivalent of

1.6 BILLION

plastic milk
bottle caps

We use
the equivalent of

280

recycled plastic bottles
per square metre
of decking





HD DECK®

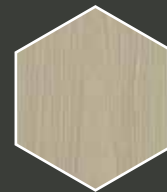
***HD Deck® Pro* delivers luxury. This extra-wide composite decking board features a traditional wood grain that will add quality and style to any outdoor living space.**

This double-sided composite board comes in two on-trend **designer shades**. The light hue of champagne is subtle and warm, whilst the elegant tone of oyster is neutral and understated.

And *HD Deck® Pro* is the only **200mm wide** capped composite decking board in the UK.

HD Deck® Pro takes composite decking boards to the next level, with its 'capped' design, creating a **coated layer** that offers increased protection against fading and the elements, for an extra long life.

- **Premium 200mm extra-wide**
- **Natural wood grain**
- **Capped stain resistant**
- **Slip resistant**
- **Durable**
- **Reversible**



Champagne
Side 1



Oyster
Side 2

Premium Extra-Wide Composite Decking

True Grain Colour System™

HD Deck® Pro Champagne



HD DECK®

HD Deck Dual® decking boards have an unrivalled likeness to timber, which really sets them apart from other composites.

The natural wood grain not only looks and feels great, it offers **maximum performance against stains.**

Our unique **True Grain Colour System™** replicates the subtle variation and depth of colour seen in timber – and ensures no two boards are the same colour.

This dual-coloured composite board offers a **reversible two-colour option**, providing the opportunity to lay a deck with contrasting colours to create a bespoke finish.

HD Deck Dual® also features a 'capped' design, creating a **coated layer** that offers increased protection against fading and the elements, for an extra long life.

- **Natural wood grain**
- **True Grain Colour System™**
- **No two boards are the same**
- **Capped stain resistant**
- **Slip resistant**
- **Durable**
- **Reversible**



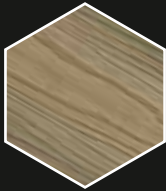
NBS Plus



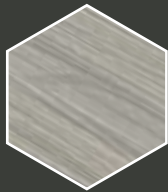
NEW Colours for 2021



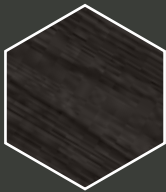
Slate
Side 1



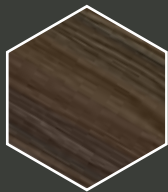
Natural Oak
Side 2



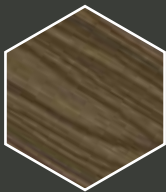
Antique
Side 1



Carbon
Side 2



Walnut
Side 1



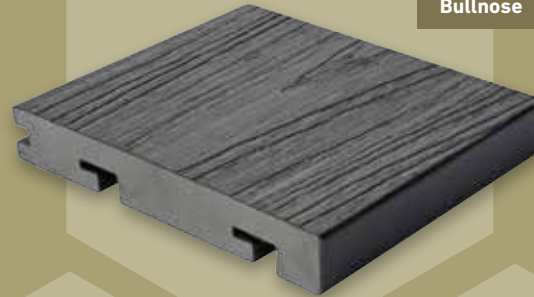
Oak
Side 2

True Grain Colour System™

HD Deck Dual® Antique



Decking Accessories



Bullnose

Exclusive to *HD Deck® Pro* and *HD Deck Dual®*, the **bullnose board** is perfect for steps and borders.



T15

Extended Torx Bit
included in every box
of Universal Clips

Universal Clip



Slim Clip

Fascia



End Caps

HD Deck Dual®
only



Starting Clip



True Grain Colour System™

HD Deck Dual® Oak

Daily Mail

“Composite Prime... durable low-maintenance decking which looks just like the real thing.”

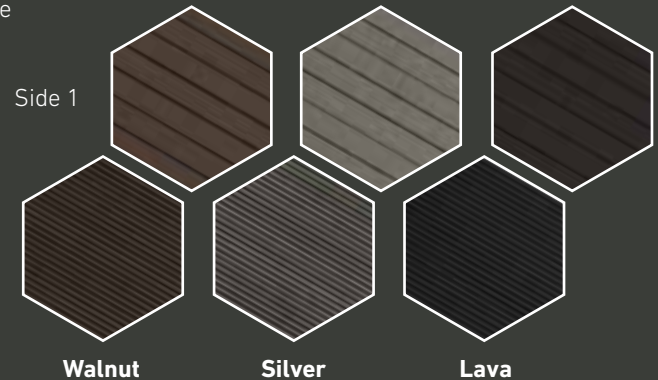


HD DECK® XS

Whether you're hosting a party, barbecue or entertainment, it's good to know that Composite Prime's decking won't splinter or become slippery because of its superior composite ingredients.

HD Deck XS® comes in three different colours, which means there's plenty of variety to choose from when designing your decking to complement the space around it.

- Contemporary design
- Popular colour options
- Two reversible profiles
- Extra strong board
- Consistent colour
- Slip resistant
- Durable

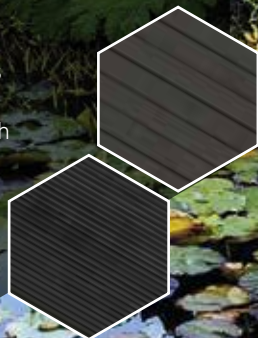


HD DECK®



HD Deck XS® Fire offers the same benefits of HD Deck XS® but is **class B fire rated**. The higher rating provides customers with balconies, verandas and roof terraces peace of mind fire protection.

Slate



Extra Strong Composite Decking

True Grain Colour System™

HD Deck XS® Walnut

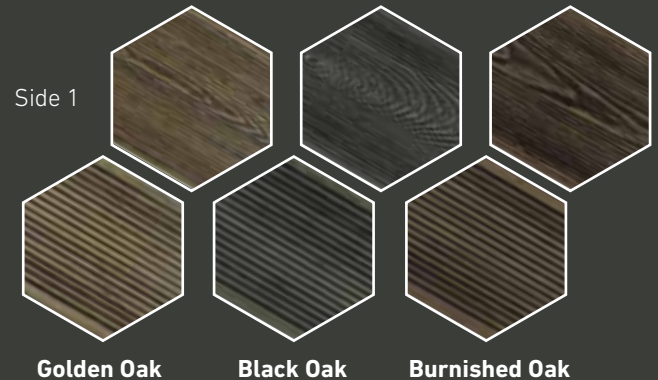


HD DECK® 3D

The unique True Grain Colour System™ – a subtle variation replicating the natural tones seen in timber – ensures that no two boards are the same colour.

HD Deck® 3D is available in three wood tones with a deeply textured wood grain on one side and contemporary grooves on the reverse.

- Textured wood grain one side
- Grooved reverse side
- True Grain Colour System™
- No two boards are the same
- Deep embossing
- Slip resistant
- Durable



A top-down view of a white plastic watering can with a perforated nozzle, a pair of green rubber boots, and various green plants on a dark wood composite deck. The deck is made of horizontal planks with a deep, textured wood grain. The watering can is on the left, and the boots are on the right. The plants are in the top left corner.

Deeply Textured Wood Composite Decking

The logo consists of four overlapping teardrop shapes in shades of brown and tan, arranged in a row.

True Grain Colour System™

HD Deck® 3D Burnished Oak



Decking Accessories



**T15
Extended Torx Bit**
included in every box
of Universal Clips



Slim Clip

Universal Clip

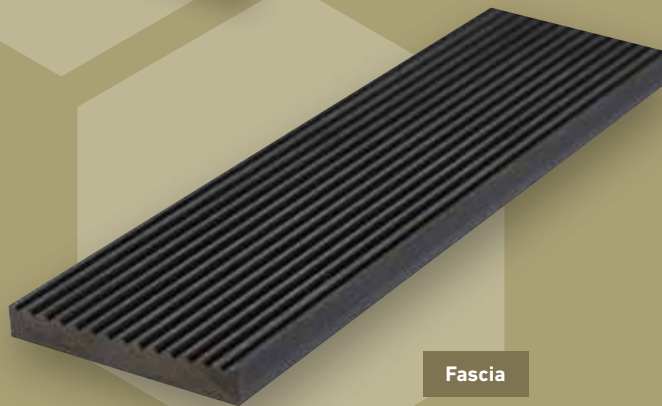


Starting Clip



End Caps

Matching **end caps** are available to conceal exposed board ends. *(HD Deck XS® only)*



Fascia

74mm fascia boards are available for a professional finish.

“Go green... create a beautiful garden without damaging the environment.”



THE SUNDAY TIMES



True Grain Colour System™

HD Deck Dual® Slate

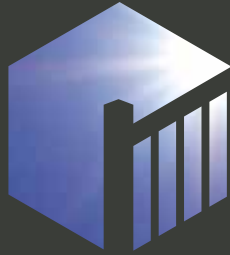
NEW FOR
2021

HD PROTECT™

HD Protect™ Premium Joist and Flashing Tape is a self-adhesive tape designed to protect the top of your timber from moisture that can lead to rot.

- **Extends the life of timber joists**
- **Oversized for extra coverage**
- **Waterproof barrier**
- **Extra thick for superior self-sealing**
- **Clean and easy to use**





EDGE™

Balustrade System

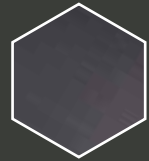


EDGE™ Balustrade System is supplied as a kit that contains everything you need to install this stylish and low maintenance solution quickly and easily.

- **Ready to fit and easy to assemble**
- **Will not rot or decay**
- **Very strong and fade resistant**
- **Requires no treatment, staining or paint**
- **Complies with building regulations**
- **100% recyclable**
- **Fully reinforced**



White



Anthracite



Golden Oak

For decks over 600mm high please seek professional advice regarding current balustrade building regulations.



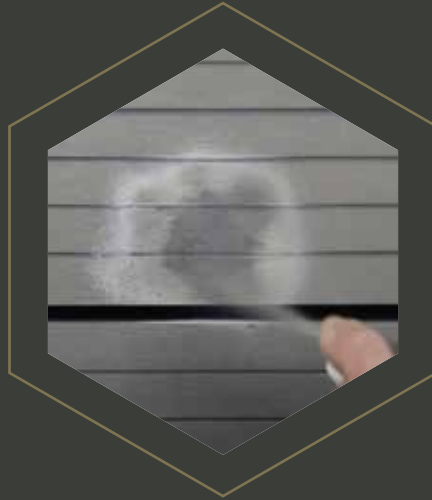
A Composite Prime Product TM

abzorbit

Grease & Oil Stain Remover

***Abzorbit*TM is a revolutionary new aerosol spray that treats and removes grease and oil stains. Simply spray on and brush off!**

*Abzorbit*TM can be used to treat stains on any timber or uncapped composite decking product. Ideal for use on *HD Deck XS*[®] and *HD Deck XS*[®] Fire.



SPRAY ON, BRUSH OFF!

STAIN • ***abzorb***[™] • GONE

Watch the video online at
www.composite-prime.com/resources



HD CLAD[®] PRO

HD Clad[®] Pro is a wood grain, composite cladding system that offers long-lasting, low maintenance natural facades for handsome exteriors.

Enhance and transform your home and garden by choosing from a range of natural colours, designed to suit your environment. *HD Clad[®] Pro* uses exclusively FSC[®] 100% certified hardwood flour and recycled plastic which combine to produce a high quality finish and **exceptional durability** that outperforms traditional timber.

Suitable for commercial and residential properties alike, *HD Clad[®] Pro's* unique properties include:

- **Easy installation**
- **Capped wood grain finish**
- **True Grain Colour System[™]**
- **Will not warp, bend or splinter**
- **Matching trims**
- **Mixed use application**



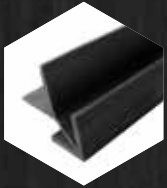


True Grain Colour System™

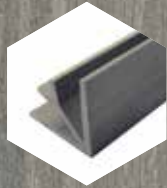
HD Clad® Pro Slate

Wood Grain Composite Cladding System

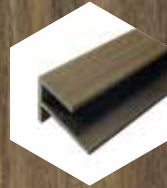




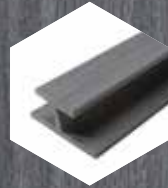
Outside corner
trim



Inside corner
trim



End trim
F-shaped



Joining trim
I-shaped



Starter clip



Starter strip



Fixing clip



Spacer button

Carbon

Cedar Grey

Cedar Brown

Slate



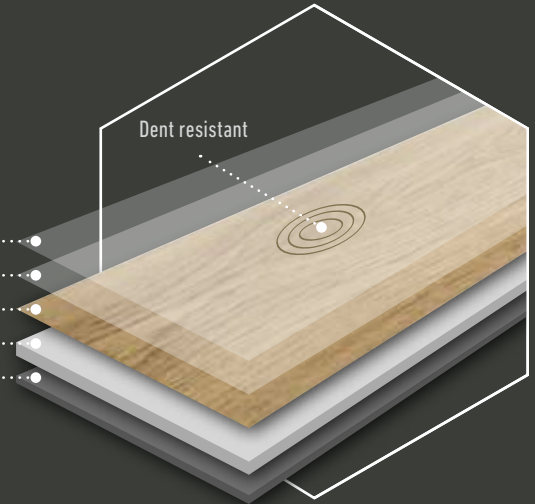
TOUCHSTONE FLOORING

Touchstone™ Flooring is a luxury interior flooring system, with a true grain wood appearance. The **textured 3D surface** gives the look and feel of natural wood, but without any of the disadvantages of solid or engineered wood floorings.

The **patented one piece drop-lock** installation system eliminates the need for specialist tools.

- **Quick and smooth installation**
- **Compatible with underfloor heating**
- **Domestic and commercial use** (Class 33)
- **Colour fast** (Grade 6)
- **Matching trims**
- **Waterproof**

- Scratch and stain resistant layer
- UV layer
- Natural wood grain
- Rigid core (4.5mm)
- Acoustic foam underlay (1.5mm)





Authentic Wood Grain Waterproof Flooring System



Patented Drop-Lock Installation

Slide into position

1



2

Drop into place



3

Click together



Zone 1 Wood Grain Finishes



Zone 2 Stone Finishes



V1

V3

Authentic Shades & Variations

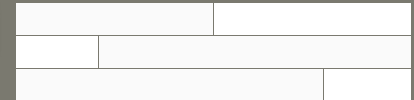
V2

All our products have an **intentionally varied appearance** that resembles the tones you'd find in natural wood and stone.

The variations range from slight (V1), to moderate (V2), and substantial (V3). This guide outlines how much variation you should expect in each product.

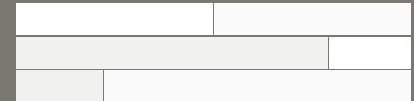
SLIGHT VARIATION

V1



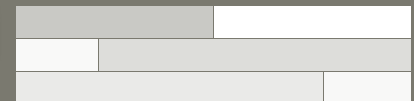
MODERATE VARIATION

V2



SUBSTANTIAL VARIATION

V3



		V1	V2	V3
HD Deck® Pro	Champagne	•		
	Oyster	•		
HD Deck Dual®	NEW Slate		•	
	NEW Natural Oak		•	
	Antique			•
	Carbon	•		
	Walnut		•	
	Oak			•
HD Deck® 3D	Golden Oak		•	
	Black Oak		•	
	Burnished Oak		•	
HD Deck XS® (flat colours)	Silver	•		
	Lava	•		
	Walnut	•		
	Slate (XS Fire only)	•		
HD Clad® Pro	Cedar Brown			•
	Cedar Grey			•
	Carbon	•		
	Slate		•	

		V1	V2	V3
Touchstone™ Flooring	Marylebone			•
	St Paul's	•		
	Angel		•	
	Sloane Square		•	
	Barbican		•	
	Pimlico			•
	Charing Cross		•	
	Hoxton		•	
	Bayswater		•	
	Knightsbridge		•	
	Holborn		•	
	Paddington			•
	Brixton	•		
	Whitechapel	•		
Maida Vale		•		
Chalk Farm	•			



Composite Prime

PRO Installer

Plan your project with our Prime Design 3D Deck Builder software



Composite Prime's PRO Installer Programme provides you with a directory of certified installers.

Every certified PRO Installer has successfully completed our intensive product training and adheres to our professional Code of Practice.

You can find your local PRO Installer on our website at www.composite-prime.com/where-to-buy

Installers interested in becoming a PRO Installer are welcome to apply online to join our team. Visit www.composite-prime.com/install for more details.

Find your local **PRO** Installer at
www.composite-prime.com/where-to-buy



@paulmark
kitchens
HD Deck Dual®
Antique

@premier.jsy
HD Deck XS®
Walnut



@hillside
landscapeservices
HD Deck Dual®
Antique

Online Resources

- Instructional videos
- Brochures
- Fitting guides
- Technical specifications
- BIM data



www.composite-prime.com/resources

www.composite-prime.com



Order today!

With our extensive network across the UK, there is a **Composite Prime Stockist** near you. Visit our website to find yours.





Chance to win
rewards with every
purchase

Find out more at
composite-prime.com/rewards



Composite Prime® as featured in...

adf



building
construction
design

METRO

Daily Mail

Design Buy Build

The Independent Businessweek presents
eppm

GCR
Garden Centre Retail.com

**HOUSEBUILDER
& DEVELOPER**



THE LANDSCAPER
THE MAGAZINE FOR ALL SEASONS

The Sunday Telegraph

living

MODERN
Gardens

ParkHome

**HOUSE
& GARDEN**

**Professional
Builder**

ProLandscaper



THE SUNDAY TIMES





www.composite-prime.com

