

# HD CLAD<sup>®</sup> PRO

A Composite Prime Product

## Wood Grain Composite Cladding System



# HD CLAD<sup>®</sup> PRO



Board Dimensions:  
22 x 136 x 3600mm

HD Clad<sup>®</sup> Pro provides a **low maintenance, durable alternative to traditional timber cladding** that is available in a range of natural colours. The invisible clip fixings and trims allow for an uncomplicated installation which will transform the exterior of residential and commercial properties alike.

HD Clad<sup>®</sup> Pro composite cladding exclusively uses **FSC<sup>®</sup> 100% certified hardwood flour** and **recycled plastic** which combine to produce a high quality product that outperforms traditional timber. The HD Clad<sup>®</sup> Pro system offers a range of complementary trims to complete your cladding project.



## Available in 4 shades



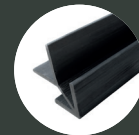
Cedar Brown

Slate

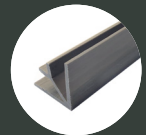
Cedar Grey

Carbon

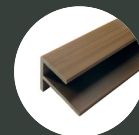
## System Components



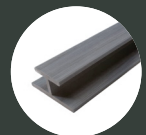
Outside corner trim



Inside corner trim



End trim F-shaped



Joining trim I-shaped



Starter clip



Starter strip



Fixing clip



Packer button

### Multiple Applications

- Residential
- Commercial
- Industrial
- Modular buildings
- Garden buildings

### Low Maintenance & Long Life

- UV stable
- No treating or painting required
- Stain resistant

### Complete System

- Easy to install
- Concealed fixings
- Composite trims
- Install horizontally or vertically



## True Grain Colour System<sup>™</sup>

HD Clad<sup>®</sup> Pro Cedar Grey